

# PROJECTS

# MAGAZINE

---

**MARCH - APRIL 2019**

---



**Britam**  
With you every step of the way

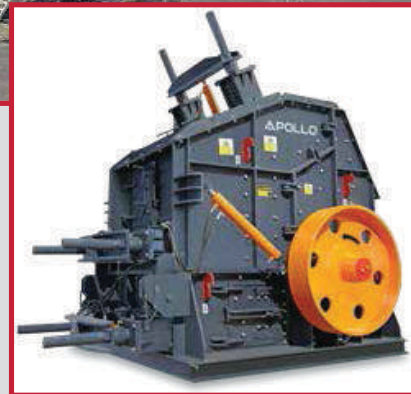
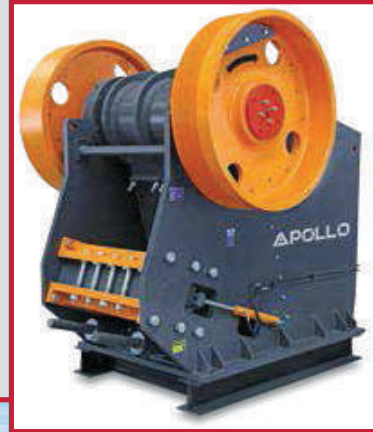
**Britam Tower, The Tallest Building In East And Central Africa.**

# GAHIR ENGINEERING WORKS

## MECHANICAL ENGINEERS & MANUFACTURERS

### FOR ALL TYPES OF PRECAST PRODUCTS

1. Road Kerbs / Road Channels
2. IBD & Side Slabs
3. Paving Slab Moulds
4. Louver Vent Moulds
5. Copping Moulds
6. Fencing Post Moulds
7. Culvert Moulds / SOS
8. Storm Drain Moulds
9. Steel Column Mould
10. Block Machine Moulds
11. Cabro Machine Moulds



- ✓ BLOCK MAKING MACHINES
- ✓ CONCRETE MIXERS
- ✓ HOIST MACHINES
- ✓ GOODS LIFT
- ✓ REPAIR OF CRUSHERS
- ✓ NEW CRUSHER SHAFTS



**GAHIR ENGINEERING WORKS LTD.**

ALL TYPES OF GEAR CUTTING / GENERAL ENGINEERING

P.O. BOX 78252 00507, NAIROBI

TEL: 020- 3540428 / 020- 2042837

MOBILE: 0722510237 / 0722510238

INDUSTRIAL AREA, PATE ROAD OFF LUNGA LUNGA

E-MAIL: [info@gahirdesco.co.ke](mailto:info@gahirdesco.co.ke)

WEBSITE: [www.gahirdesco.co.ke](http://www.gahirdesco.co.ke)

**APOLLO**

Quality Mining Equipment

Authorized Dealers of Apollo  
Crushers, Gujarat, India

Your Dependable Partner

South Africa | Zambia | Zimbabwe | Mozambique | Namibia | Ghana | Angola | Kenya | Botswana | Ivory Coast | Pakistan | India | UAE

One of the leading Condition Monitoring companies worldwide

Our primary goal is to maintain plant, components and machinery in tip-top condition to yield maximum output.

How? With a comprehensive proactive maintenance programme that uses oil analysis and many reliability solutions services.

We offer analysis of oils, fuels, coolants, greases, filters, heat transfer fluids, transformer oils, turbine and wind turbine gearbox oils and more.

“Speak to a WearCheck consultant today to find out how we can help

Download our NEW Condition Monitoring App. WearCheck Mobile. Anytime, Anywhere.

SABS ISO 9001 | ISO 14001 | SANS 17025



[www.wearcheck.co.za](http://www.wearcheck.co.za)

[wearcheckafrica](https://www.facebook.com/wearcheckafrica)

t: +27 (0)31 700 5460

### **PUBLISHER**

E. S. C Magazine T/A Projects Magazine

### **SOUTH AFRICA OFFICE**

Tel: +27 11 027 9009 Fax: +27 86 601 9195

62, 2nd Avenue, Houghton.P.O. Box 92744, Norwood, 2117 South Africa

### **KENYA OFFICE**

WOOTA PUBLISHERS P. O. Box 178-20114, Kabazi, Nakuru, Kenya.

Tel: +254 701 552 963

### **UGANDA OFFICE**

Plot no.768, Entebbe road, Kawuku, Kampala

Tel : +256 75 510 1313, Uganda.

Email: [info@projectsmagazine.com](mailto:info@projectsmagazine.com)

Website: [www.projectsmagazine.net](http://www.projectsmagazine.net)

### **Contributions**

The editors welcome news items, press releases, articles and photographs relating to

Construction Industry. These will be considered and, if accepted, published. No responsibility will be accepted should contributions be lost, damaged or incorrectly printed.

© All rights reserved



## Britam Tower Named Top Skyscraper In Africa In Global Architecture Awards



**B**ritam Tower has received the Emporis Skyscraper Award, becoming the only skyscraper in Africa to feature among the top ten buildings in the world, in the Award's nine-year history.

The Emporis Skyscraper Award is the world's most renowned prize for high-rise architecture. Winners are chosen by a jury of architecture experts from all over the world, while the nominated buildings are judged based on their achievements in functions and aesthetics.

The Iconic Tower, developed by Britam Properties Limited, is currently the tallest building in East and Central Africa, rising from Nairobi's skyline at 200 meters, and is Britam's flagship project for its property strategy.

Located in the upmarket Upperhill area, the 31-storey skyscraper offers panoramic and breathtaking views of the capital and surrounding areas, like the Nairobi National Park. On clear days, both Mount Kenya and Mount Kilimanjaro can be seen from the top of this cutting edge building.

Commenting on what inspired the design and architectural concept of the skyscraper, Traid Architects stated, "*Britam Tower is the international headquarters of Britam Holdings Plc. It also serves as the regional headquarters of the business conglomerate in East and Central Africa, so the client wanted a multitenanted iconic office building that embodied the qualities of strength and stability, being timeless and ageing*



*gracefully, to be an inspirational and environmentally responsible place, both inside and out. The building had to make sound commercial sense to the investor and tenants alike and add value to the precinct in which it is situated”.*

Announcing the awards, Emporis, a leading database of information about building and construction projects, based in Germany, stated that Britam Tower was the first skyscraper in Africa to feature among the winners since its inception in 2000.

*“Britam Tower by GAPP Architects and Triad Architects was the first skyscraper in Africa to feature in the top ten Emporis Skyscraper Award's list. It made its way to the tenth position among other outstanding skyscrapers in the world,”* Emporis said in a statement.

## Architecture

The Britam Tower was assessed among other buildings in Europe, Asia and the United States that included Generali Tower in Milan, Chicago's 150 North Riverside and Riverpoint. The top spot went to the Lotte World Tower in Seoul, South Korea.

*“Triad Architects takes pride in leading the design and construction processes of Britam Tower. The firm continues to design award winning buildings in Africa. Our approach is to design creative and unique spaces that meet current international standards and are infused with an elegant local flair. We are proud to be associated with this prestigious list of outstanding skyscrapers,”* the firm said in a statement.



### SERVICES WE PROVIDE

Design and detailing of structural steelwork At David Engineering Ltd we have a strong design and detailing team who design using British Standards and using the latest software and CAD stations. We have also designed and undertaken projects as per Japanese and South African Standards. Installation of structural, heavy and related steelworks Our teams are well versed with structural steel rigging and can undertake any steel installation job professionally, safely and with ease leaving the client satisfied.

Plant and equipment hire  
Machinery installation  
On site machinery assembly and installation.  
Overhead crane erection and assembly.

**" WE ARE PROUD TO BE ASSOCIATED  
WITH BRITAM TOWER"**



P.o Box 27722-00506,  
Nairobi, Kenya.  
Tel: +254 20 2513939, 2513942, 2513962 2376339.  
Mobile: +254 724 390666, +254 733 333483,+254 719619878  
kenya@davidengineeringltd.com  
WebSite:www.davidengineeringltd.com



Completed in November 2017, Britam Tower is owned by Britam Life Assurance Limited and was developed by Britam Properties, a fully owned subsidiary of Britam Holdings Limited.

The ultra-modern tower has a total lettable space of 350,000 square feet with 1,000 parking bays achieving one of the highest parking ratios in Nairobi, that meets international standards. Letting of space in this Class A building is ongoing and has attracted international organizations.

It comprises of two separate buildings, one is the 31-storey office tower and the other a 12-storey parking silo. The two buildings are linked on the ground floor as well as by a bridge at the tenth level of the parking silo, that provides an alternative means of evacuation of the tower during emergency situations.



### **Green Building**

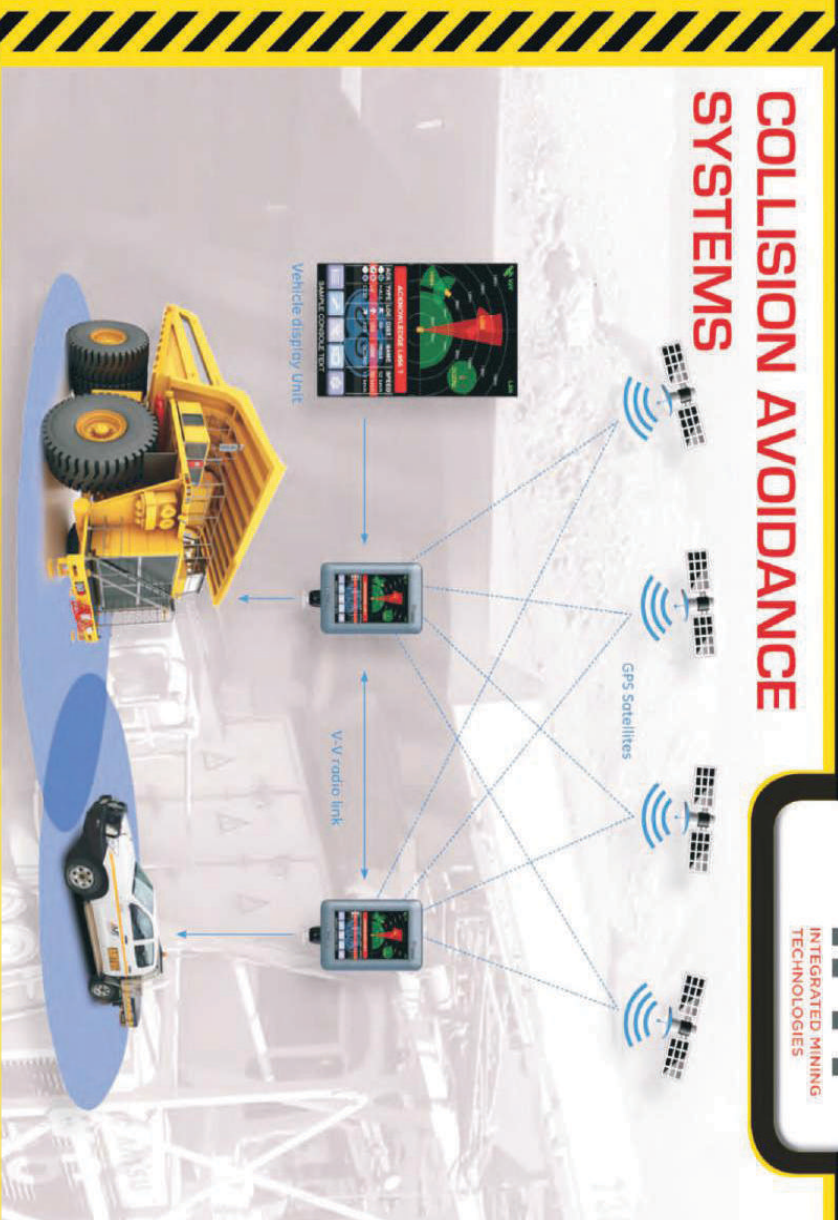
The Tower adheres to international green building standards, with several green features, including rain water harvesting, water recycling and reuse facilities, use of water and energy saving sanitary and light fixtures besides being designed for natural ventilation and daylight. The tower complies with international fire safety standards.

As a result, Britam Tower was presented with the EDGE (Excellence in Design for Greater Efficiencies) in 2018, by the International Finance Corporation (IFC). The award recognizes and rewards developers who implement strategies to save energy and water use in their building.

Britam embarked on its property and real estate strategy in 2011, as part of the Group's diversification strategy to provide real estate exposure to investing clients, by taking advantage of the thriving property sector in Kenya.



# SAFETY AND PRODUCTIVITY



## COLLISION AVOIDANCE SYSTEMS

seeingmachines

**PROBE CAMS**

Tel: +27 13 697 0660  
Fax: +27 86 570 1036

**WITBANK**

Tel: +27 13 692 4161  
Fax: +27 13 692 3337

Master SAFETY SERIES

**JOHANNESBURG**

Tel: +27 87 353 4280  
Fax: +27 11 453 2141

HAMMER HEADS Lighting Products

**RUSTENBURG**

Tel: +27 14 596 6285  
Fax: +27 14 596 6574

imagination at work

**PROBE MOZAMBIQUE**

Tel: +258 239 21948  
Cell: +258 82 501 0051

POWER STEER SAFETY ACCESS SYSTEMS  
Simply a step in the right direction

Delco Remy



## In It for the Long Haul



***Fully customizable, high performance coal bodies are designed to each mine's specifications.***

**A**lbert Einstein once said, "The important thing is not to stop questioning." In the mining industry, a lack of inquisitiveness may lead to a blissful ignorance but it certainly won't increase efficiencies.

While one may claim necessity is the mother of invention, questioning and analyzing how methods and systems can be improved is the catalyst to discovering necessities.

Understandably, when working in a coal mine, where trucks operate around the clock every day of the year, it's nearly impossible to pull the nose from the grindstone long enough to provide thorough analysis. But fortunately some manufacturers/"inventors" have assisted by taking a long hard look at the process and ensuing headaches within this application.

On the surface, it may appear as though truck bodies don't deviate much from one design to another with their applications deviating even less. Each day is virtually the same in coal mines around the world – trucks spend their time loading and unloading countless tons of coal. However, take a moment or two to speak with an operator about the pain in his or her day and it's easy to see that assertion couldn't be further from the truth. The goals of these operators may all be the same – increase payload, decrease downtime and get the highest lifespan on the truck – but the outcome in each mine depends greatly on the equipment at use.

Philippi-Hagenbuch has engineered a High Performance coal specific truck body design that address the three major challenges inherent in the coal industry. First, the design maximizes full truck capacity to increase potential profit. Second, the bodies are



***Engineered to provide operator stability and safety, high performance coal bodies are designed to keep 1/3 of the weight on the front of the truck and 2/3 of the weight on the back of the truck.***

constructed so little maintenance is needed, decreasing downtime. Finally, the truck body is engineered to have an average life span that exceeds coal body alternatives.

### **Filled To The Max**

Coal is mined in more than 50 countries, with a total of more than 7,000 million tons per year (Mt/yr) of coal being produced. That total is expected to climb to more than 13,000 Mt/yr by the year 2030. With numbers such as these, it only makes sense that equipment constructed for coal hauling is constantly becoming more efficient.

Trucks are all designed with a finite capacity. Part of that capacity, of course, is the truck itself. In a perfect design, the amount of coal able to be hauled would

consume the rest of the capacity limit.

High Performance coal bodies are engineered with that exact goal – to maximize truck hauling capacity and increase payload. Designed with the mine in mind, these bodies are custom constructed after all specifications have been taken into consideration – height and width restriction, loading equipment shovel type and size, the grades trucks will be driving on, hauling distance and the average number of haul cycles per day.

With this knowledge at hand, High Performance coal bodies are constructed in a way to achieve the greatest capacity possible. Bodies are wider and match up with the loading equipment shovel, allowing for a larger loading target.





***High performance coal bodies are wider and match up with the loading equipment shovel, allowing for a larger loading target.***

Additionally, bodies are constructed based on the results of the Load Profiled™ system. Load Profiled examines the natural angle of repose (how the material lays once dumped out of a container) of the materials being hauled. Based on this information, the design is engineered so that the greatest load can be achieved.

To further increase capacity limits, High Performance coal bodies can be constructed in a lightweight version. Still designed around the specifics of each mine, this “throw-away” version is constructed with a lighter body weight in order to achieve an even greater capacity. While not the standard, as these coal bodies provide only 3 to 5 years of life, in some mine operations this design is desired to get the most immediate payload possible.

Focusing on the specifics of the mine

significantly increases hauling productivity. In fact, High Performance coal bodies can increase an operation's hauling rate by 10 to 15 percent more than alternative or traditional coal bodies. Customizing the body to each individual mine also aids in productivity by ensuring low maintenance.

**Decreasing Downtime**

In an industry where trucks are running around the clock, 365 days of the year, productivity is the last thing that should be sacrificed. In order to ensure downtime is minimal and job productivity stays high, low maintenance equipment is a necessity.

Based on Load Profiling, bodies are designed for increased stability and operator safety. High Performance coal bodies are constructed with a low center of gravity, and with 1/3 of the weight on the front of the truck and 2/3 of the weight on the back of



the truck. Doing so puts the truck at its greatest weight distribution. Additionally, a wider truck body allows the shovel to get down lower to the floor of the body – providing the lowest loading height and eliminating the potential for loading equipment to damage the sides of the body. This provides less vibration to the truck driver and less impact on the body when coal is loaded, as well as eliminates loading equipment damage.

Unlike traditional coal trucks that are constructed with straight body sides, High Performance coal bodies are engineered with outwardly tapering body sides, desired for a better load release. Tapering the body decreases the abrasive wear that occurs due to the constant scraping of materials on the sides of the body when dumped.

Due to the lightness factor of coal, High Performance coal bodies are often constructed with a tailgate to enable greater control of the load. However, to further eliminate even the slight maintenance need that comes with a tailgate, coal bodies can also be gateless.

### **Extending Life**

With the intense, 24/7 work done in mines around the world, it's important to use quality materials to extend truck life. The key to any house is a good foundation. If a house isn't built on a good foundation, it will crumble. The same holds true for truck bodies. To ensure a good foundation, High Performance custom truck bodies run steel bolsters from side to side under the body floor. But unlike traditional bodies, which simply butt-weld the bolsters to the frame rail, High Performance bodies run the bolsters through the frame rails, doubling up the "sweet spot" within the center floor

section. By intersecting the bolsters with the frame rails, which run from front to back, these custom bodies create a super-structure that won't buckle under the immense weight of the mined materials.

This enhanced truck design couples with some of the strongest steel in the world to significantly extend the life of the truck. Steel with a Brinell of 450, which is manufactured in Sweden, has been found to be the strongest, most durable steel available. Within High Performance coal bodies, the steel is used only where steel is needed (at the greatest load containing areas) –providing body durability while ensuring payload isn't sacrificed. Even in intense environments and after hundreds of thousands of tons hauled to and from mines, the steel doesn't show signs of wearing thin. In fact, constructing the bodies in such a fashion increases the life of the trucks by 25 to 30 percent.

### **A Purpose Driven Design**

Questioning exactly how a mine operates and has changed the success rate of mining operations throughout the world. Custom design increases productivity rates, while superior construction decreases downtime and increases truck life. It's a focus that's paying off in payload significantly – and helping contribute to the expected 2030 date of reaching 13,000 Mt/yr of total coal production.

It turns out that inquisitiveness, not ignorance, results in bliss.

# CULTURE MAMBO LOUNGE



**C**ulture Mambo Lounge is a fascinating bar and restaurant located in Nakuru town along government road opposite Egerton University Nakuru town campus. It is strategically positioned to attract prospective customers. The outlook is attractive and the entrance serves to satisfy the eye of both passer-by viewers and the customers entering the lounge. The lounge is newly constructed with the aim of providing high quality and standard services to satisfy whoever gets an encounter with it. With the increasing demand in common space of social interaction and relaxation



*Culture Mambo  
Lounge serves  
to quench this thirst*





,Culture Mambo lounge serves to quench this thirst. As it is the mode and culture of the working class to have a common point of interaction especially on weekends so does Culture Mambo offer such a fascinating and affordable place for such an outdoor activity. Culture Mambo lounge is such a unique place to the extent that it is not only packed to capacity on weekends only but also on weekdays. Several factors play a role in enhancing constant flow of customers ranging from unique architectural design, high class services, affordable prices to classy interior arrangement.







*Culture Mambo offer such a fascinating and affordable place for such an outdoor activity*





**address** :: PO Box 2339-20100, Nakuru, Kenya  
**phone number** :: (+254) 733-193-123  
**email** villallegradev@gmail.com



Villa Allegra was envisioned as a turn key solutions provider as a result of the exposure to the middle-eastern method of construction service delivery. Traditional building solutions employ many contact points for the client and can prove tedious for large projects. At villa Allegra we strive to produce the EPC solutions that give the client a peace of mind.

We at Villa Allegra limited, set ourselves apart from every other construction company simply by our strong philosophy and our work culture. Through every project, we set new standards.

Strategic planning, attention to detail, stringent and careful rules on safety, customer satisfaction and the aspiration to grow into a global firm is what has made Villa Allegra grow steadily. The assignments at hand are a reward to our expertise as well as, signify the trust that customers have in Villa Allegra Limited. Considering our resourcefulness, technical and administrative capability, coupled with vast experience in the field of construction, we are fully confident of executing every type of assignment with quality and speed. Given a chance, not only will we offer the most competitive rates, but also deliver quality work well in time, rather, ahead of schedule. In the recent past, we have successfully completed many projects, of different nature, and high magnitude throughout Kenya.

In the coming years, we plan to explore and expand our potential by, contributing to the outstanding infrastructure development of the nation. We at Villa Allegra Ltd. stand for unprecedented growth and extraordinary commitment to making a better tomorrow."

Joseph Ndune Nyaga  
Director



## AREAS OF EXPERTISE

The turnkey solutions cover the following areas

### **Architectural Design**

- Building design
- Interior design
- Landscaping and Gardening

### **Civil and Structural design**

- Buildings
- Roads and bridges
- Industrial Structures

### **Building Economics and procurement**

Quantity Survey services for the economic and sustainable costing of structures

- Supply of Construction materials including importation

### **Building and construction**

Combining all manner of trades to produce a project to required specifications











Head office address;

**Government road, S.M Plaza 2ND  
Floor, P.O BOX 2339\_20100; Nakuru.**

Nairobi Satellite office:

**LORESHO SPRINGS APARTMENTS- B5B**



3 Telephone:

**Mobile;0733193123  
0706285083**

Contact Person:

**NDUNE NYAGA(G.ENG)  
Director**

4 Primary Email

**Eng.ndune@gmail.com**

Secondary Email

**info@villaallegra ltd.com**

## VILLA ALLEGRA LIMITED

Experts In Program and Project Management, construction delivery,  
Cost Consultancy and Development Advice

We Are Proud To Be Associated With The Construction Of  
Culture-Mambo Lounge Bar And Restaurant  
Opp. Egerton University Nkr Campus  
Near Westside Mall.



**VILLA  
ALLEGRA**

address :: PO Box 2339-20100, Nakuru, Kenya

phone number :: (+254) 733-193-123

email villallegradev@gmail.com





# More than Max Payload



**M**ining operation managers often consider custom truck bodies as a means to help maximize payload and overall productivity. However, in addition to boosting capacity and improving efficiency, custom bodies can also provide significant savings through reduced maintenance and extended equipment life. By addressing not only payload, but also weight distribution, equipment wear and maintenance costs, custom bodies can provide substantial ROI, faster than expected.

## **Weight Distribution**

Typically, rigid-frame haul trucks are designed to carry one-third of a load's weight on the front axle and two-thirds on the back. When loading standard bodies, however, operators often center the load too far forward in order to prevent spillage. By continually loading materials toward the front, additional stress is put on the chassis, axles, front tires, suspensions and hydraulic systems. Front tires, for example, can only support so much weight before they blow or rim damage occurs.

By optimizing weight distribution, custom

bodies can extend the life of front tires by as much as 40 percent. With most mining truck tires costing upward of \$10,000 apiece, and some larger ones topping out at \$100,000, the savings add up quickly. Combine those costs with the downtime associated with replacing tires and the impact can be devastating to the bottom line.

## **Extended Service Life**

With the intense, around-the-clock beating that off-highway trucks receive, it's important that they are up to the task. To help, some manufacturers run steel bolsters from side to side under the body floor, as opposed to bolsters being butt-welded to the frame rail. These bodies also run the bolsters through the frame rails, doubling up on the "sweet spot" within the center floor section. Intersecting the bolsters with the frame rails creates a super-structure that won't buckle under the weight of high-capacity loads.

This design is often coupled with some of the strongest steel in the world to further extend the life of the truck. Within higher performing bodies, the steel is used only where necessary



— the greatest load and impact areas — to provide durability without sacrificing payload. Constructing the bodies in such a fashion can increase the life of a truck by 25 to 30 percent.

#### **A Perfect Match**

Custom bodies can also be designed to complement a site's loading equipment. Matching the body to the height and style of loader helps to reduce damage to both the truck and loading equipment. Widening the body to allow the loading equipment to reach the floor of the body can further help by lowering the drop height and reducing the risk of equipment damaging the sides of the body. Dropping the load from a lower height can reduce the impact on the floor by as much as 30 percent.

From extending the service life of expensive equipment, to reducing downtime and preventative wear, the benefits of custom bodies can add up quickly, and are certainly not limited to improved efficiency.

#### **About Josh Swank**

Josh Swank, vice president of sales and marketing, is a 17-year Philippi-Hagenbuch associate. Swank oversees the sales group, specializing in the refuse industry and all company marketing efforts. His previous roles within the organization include global sales and marketing manager and account manager.

#### **About Philippi-Hagenbuch**

Philippi-Hagenbuch Inc., Peoria, Illinois, has been building equipment for off-highway haul trucks since 1969 and has become a global leader in off-highway truck customization. The company designs and builds custom HiVol<sup>®</sup> specialty bodies, rear eject bodies, tailgates, sideboards, lowboy trailers and water tanks for nearly every make and model of rigid frame and articulated off-highway truck available. For more information, go to [www.philsystems.com](http://www.philsystems.com).



# Kenya Railways Digs In For SGR Land Billions



**K**enya Railways has asked the High Court to compel the National Lands Commission (NLC) to disclose all monies paid for land compensation under the Standard Gauge Railway project (SGR). In a judicial review application filed before Lady Justice Pauline Nyamweya Kenya Railways Corporation is seeking to know unpaid amount as well and the challenges the commission is facing in making payments.

Through lawyer Peter Munge of MMC Africa Law, Kenya Railways argues that the matter is of national importance and any delays in settling compensations would affect a big number of people.

The push for disclosure comes amid talk of scandal in compensations, where the value of land was inflated. NLC senior officials have been charged with manipulating compensation figures and illegally paying millions of shillings to

individuals presenting dubious documents during construction of Phase One of the Sh327 billion Standard Gauge Railway line.

While the government had projected to spend Sh3.8 billion on land compensation in the SGR project, the first phase from Miritini to Embakasi consumed Sh30 billion, or 10 times the original budget.

“Timelines on the completion of the payments was agreed upon in a multi-agency meeting and I believe that the deadline was set for payment of compensation to land owners,” Mr Munge told the Court. “The commission needs to understand the urgency of the matter given that part of the corridor has been taken up by the contractors.”

NLC argues that partial payments had been made but due process was slowing

the process down. "We are aware of the urgency of the matter given the public interest but the commission is not in a position to respond on the timelines on the payments. We have made some payments and in fact the remaining amount is about Ksh6 billion. Making the payments requires a process and some of these matters are in court and that is why it is taking time," NLC argued. Kenya Railways agrees that indeed NLC had made some payments but only after being provoked by the suit filed against them. Lady Justice Pauline Nyamweya had set the date for the next mention to be February 13, 2019. This comes shortly after Kenya Railways took the National Lands Commission to court over delay in paying 1,090 landowners a total of Ksh17.7 billion meant for land compensation that has caused delays in some parts of the corridor for the

Nairobi-Naivasha line. It is understood that NLC officials have been armtwisting beneficiaries for kickbacks. Kenya Railways had argued that the National Lands Commission had received the compensation money from the National Treasury from between October 26, 2018 to December 2018 but had failed to remit the money to the affected land owners without any just reasons despite approval of the compensation schedules by different Government agencies. Kenya Railways then moved to court to compel NLC to make the payments to affected land owners over fears that compensation would delay completion of the Standard Gauge Railway which is set for 31 st May, 2019.

**MiniStore**  
Organize Your Space

**STORAGE ON DEMAND**  
| SAFE | AFFORDABLE | MONTHLY | CONVENIENT |

- ✓ Safe - Within a Secured Walled Compound with CCTV
- ✓ Individual Units that are Tenant Locked and Professionally Managed
- ✓ Affordable Unit Pricing (Discounts for 6 months or more)
- ✓ Short Term Rentals - 1 Month Minimum
- ✓ Easy Access -30 min from CBD, Airport/ Embakasi, Gigiri, Kilimani, Westlands, Lavington
- ✓ Individual Unit Sizes from 100 SF Upwards

**IDEAL FOR:**

- ✓ Micro and Small Entrepreneurs
- ✓ Diplomats/Expats
- ✓ Students
- ✓ Freight Forwarders
- ✓ Moving Homes/Families
- ✓ Moving Abroad Temporarily
- ✓ Temporary Storage to Avoid High Demurrage Charges

**PERSONAL STORAGE**  
**BUSINESS STORAGE**

**DOCUMENT STORAGE**  
**BULK STORAGE**

+254 788 744 098 | info@bpl.co.ke

**LOCATION:**  
Ruiru Town Off Thika Highway  
a development by Butterfly Properties Limited



## ENEL STARTS CONSTRUCTION OF 140 MW WIND FARM IN SOUTH AFRICA



**T**he Nxuba project, which is slated to enter into operation by September 2020, is expected to generate over 460 GWh annually and will be the Group's third wind farm in the Eastern Cape province.

The company will invest a total of over 200 million euros in the construction of the project, which is part of the 700 MW of wind capacity awarded to the company in April 2015 following the South African government's renewable tender Rome and Johannesburg, February 12th, 2019 - Enel, through its renewable subsidiary Enel Green Power RSA (EGP RSA), has begun construction of its 140 MW Nxuba wind farm in the Amatole District, making it the Group's third wind project in South Africa's Eastern Cape province. The construction of Nxuba, which is expected to be completed by September 2020, will involve an overall investment of more than 200 million euros.

“Through the start of construction of the Nxuba

wind farm, which is the first out of the five projects awarded to the company in South Africa's 2015 renewable tender to begin construction, Enel confirms its commitment to grow and strengthen its presence in the country,” said Antonio Cammisecra, Head of Enel Green Power, the Global Renewable Energy business line of the Enel Group. “This new project reaffirms EGP RSA's contribution to further diversify South Africa's generation mix, while supplying sustainable energy to Eskom, and promoting the socio-economic growth of local communities.”

Once fully up and running, Nxuba is expected to generate over 460 GWh per year, avoiding the emission of around 500,000 tons of CO<sub>2</sub> into the atmosphere each year. The wind farm will be supported by a 20-year power supply agreement with the South African energy utility Eskom, as part of the South African government's Renewable Energy Independent Power Producer

Procurement Programme (REIPPPP) tender, which awarded in April 2015 a total of five wind projects for 700 MW to the Enel Group in its fourth round.

EGP RSA will employ innovative tools and practices to build Nxuba such as advanced digital platforms and software solutions to monitor and remotely support site activities and plant commissioning, digital tools to perform quality controls on site and smart tracking of wind turbine components. These processes and tools will enable swifter, more accurate and reliable data collection, improving the quality of construction and facilitating communication between on-site and off-site teams.

In addition, the company, with its local partners, has committed to ensure meaningful socio-economic and enterprise development, preferential procurement, and job creation in the surrounding communities, involving local businesses as suppliers, providing free WiFi to communities in the area and holding wind technology training courses for locals. EGP RSA also focused on education, which is key for socioeconomic development, by supplying schools with clean energy through mini-PV systems, awarding scholarships to students and supporting a school feeding programme.

The other projects awarded to EGP RSA in Round 4 of the REIPPPP tender are the 140 MW Oyster Bay wind farm, also in the Eastern Cape, as well as the 140 MW Garob, the 140 MW Karusa and the 140 MW Soetwater wind plants, all in the Northern Cape province. EGP RSA already has more than 520 MW in wind and solar plants in operation in South Africa. Its solar plants are the 10 MW Upington and the 82.5 MW Adams, in the Northern Cape



province, the 82.5 MW Pulida in the Free State province, the 66 MW Tom Burke in Limpopo, and the 82.5 MW Paleishuewel in the Western Cape. Its wind farms include the 88 MW Nojoli and the 111 MW Gibson Bay, both in the Eastern Cape.

Enel Green Power is the Enel Group's global business line dedicated to the development and operation of renewables across the world, with a presence in Europe, the Americas, Asia, Africa and Oceania. Enel Green Power is a global leader in the green energy sector with a managed capacity of about 43 GW across a generation mix that includes wind, solar, geothermal and hydropower, and is at the forefront of integrating innovative technologies into renewable power plants.



PO Box 3365, Montana Park, 0159  
 375 Caliandra Street, Montana Park x91  
 Tel: 012 524 9300 Fax: 012 524 9358  
 Email : info@dcelectrical.co.za

**We Specialize in:**

\*Hospitals

\*Commercial Buildings

\*Reticulation

\*Factories

\*Shopping Centres

\*Supply and design of projects



**CCG** PLANT



# IT'S NOT A GAME... BUT A COMPACT CEMENT GRINDING PLANT WHICH MAKES YOU A WINNER

The CCG is a small-scale grinding plant with Loesche's proven, state-of-the-art LM 24.2 CS vertical mill, designed to produce all types of cement. It is your winning business model for local cement production at the market.

For further information please contact  
Udo Meyer  
Tel: +27 (0)11 482 2933  
Fax: +27 (0)11 482 2940  
Email: [umeyer@loeschesa.co.za](mailto:umeyer@loeschesa.co.za)  
[www.loesche.com](http://www.loesche.com)



**MOTHEO**   
CONSTRUCTION GROUP

GENERAL CONSTRUCTION • CIVILS • WATER • ACADEMY



*The Motheo Construction Group was established in 1997 by Dr Thandi Ndlovu. Motheo has during its 21 year history developed into one of South Africa's leading, predominantly black female - owned construction companies. Motheo is a leading provider of Social Housing in the country.*



**Head Office Details:**  
280 Kent Avenue, Randburg,  
Johannesburg.  
Telephone: 011 789 8440



**LINDILE MTEZA  
& ASSOCIATES**

quantity surveyors • project cost consultants

### Our Mission

Our mission is to provide professional service advice and solutions to our clients by:

- Adding value to all projects we are involved in – giving independent unsurpassed professional advice
- Provide accurate information for informed decisions making by our clients
- Act as extension of our clients by carrying all assignments according to brief
- Relieve our clients of non-core activities to concentrate on core business
- Actively promote and practice empowerment and affirmative action

### Contact Us Pretoria

Tel: +2712 430 2235  
Fax: +2712 430 6487

Email: [info@lmaqs.co.za](mailto:info@lmaqs.co.za)

Physical Address:

220 Farenden Street,  
Arcadia, 0084

Postal Address:

P.O. Box 11340, Hatfield, 0028

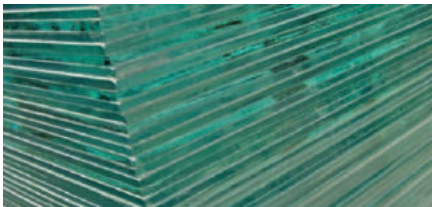
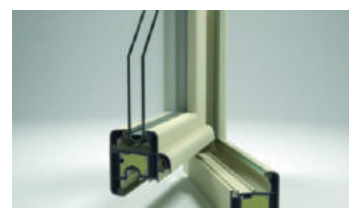
# PROJECTS MAGAZINE

Website: [www.projects magazine.net](http://www.projects magazine.net)



## CANON ALUMINIUM FABRICATORS LTD

*Quality Glass Manufacturers*



 **DOUBLE GLAZING**  
 **LAMINATED GLASS**  
 **CANON CEILING**

 **PROCESSED GLASS**  
 **ALUMINIUM SECTION**  
 **TOUGHENED GLASS**

 **UPVC PRODUCTS**

Canon Aluminium  
Fabricators  
Mombasa Road, Nairobi  
+254 020 826292/3  
[info@canonaluminium.com](mailto:info@canonaluminium.com)  
FAX: 254 020 8213



# JONGONGA GENERAL BUILDINGS RENOVATIONS



**J**ongonga General Buildings Renovation has several years of experience in housing development, concrete works, gravity sewers, earthworks, major plumbing, Renovations, Roofing and Painting/Coating. We maintain a strong foundation of trust and mutual respect generated through positive relationships with clients, architects, engineers, subcontractors and suppliers. Our company policy encourages shared performance responsibility ensures the highest degree of professional services and results on all projects undertaken.

Since its founding, Jongonga General Buildings Renovation has experienced sustained and steady growth, with a workforce of experienced employees in its Headquarters in the city of Nairobi, Kenya. The firm intends to open two branches in the coming year; one in the Western Kenya city of Kisumu and another at the Coastal City of Mombasa.

Jongonga General Buildings Renovation has laid down a strong foundation for diversified General Construction work, Renovations of Buildings, Supplies of Construction and Building Accessories. Also included in its prime

works are Interior Decoration including Drainage and Plumbing, Painting and Coating, Wall Master, Rough and Tough, Scheming and Fabrication, interior woodworks such as cabinet and wardrobe construction. The Company is distinguished by quality, integrity plus teamwork Building experience.

## **Key Responsibilities For Jongonga contractors Are :**

*Preparing the concrete pouring schedule and monitoring the concrete quality.*

*Checking and calculating the formworks area, quality and size.*

*Checking the reinforcement bars and calculating the steel area for the reinforcement bars.*

*Checking the columns, beams, slabs and shears walls if they are setup with the correct dimensions as in the drawing plans.*

*Calculating and checking the elevations by the use of the Total station.*

*Reading and analyzing structure project drawing plans.*

**Our vision**  
is to be the **construction company of choice** in the world of competitive contractors of quality.

**Our Mission**  
We aim at being the **leader in Africa** of safe and **competitive construction of housing** and general building projects stretching from **residential, commercial, warehouses, hotels to renovations and refurbishments** of establishments.

**Jongonga General Buildings Renovation**  
believes and is committed towards continual growth in the following areas:-

- 1) **Team Work**
- 2) **Honesty and Integrity**
- 3) **Respect and commitment**
- 4) **Creativity and Innovation**



*Building plans are drawn according to **clients' specifications**; adding professional and intrinsic finishes ending up with **exquisite homes and commercial buildings** that bring dreams to fruition*

## ENGINEERING **BEYOND** CONVENTIONAL THINKING

**We offer a unique combination of in-house engineering services, from concept to final implementation.**

### **Our services, amongst others include:**

- Detailed design and quantification of all essential civil engineering services
- Bulk earthworks design
- Geotechnical investigations
- Tender processes for appointment of contractors
- Project Management
- Design and detailing of reinforced concrete structures and structural steel buildings
- Facilitation of all aspects of NHBC registration, approval and compliance inspections



### **For more info:**

- ☎ +27 (11) 805-5560/1/2
- ✉ info@kce.co.za
- 🌐 kce.co.za

**.kce**  
CONSULTING  
CIVIL - STRUCTURAL  
INFRASTRUCTURE



## Our Services

Among the services we offer our clients are the following:-

1. Erection, construction, alteration, or repair any building or other structure, project, development, or other improvement on or to real property, or secondly
2. We Erect, construct, alter, or repair any fixed works such as waterways sewers and sewage disposal plants and systems, waterworks and water distribution systems, pipelines and other systems for the transmission of liquid or waste
3. Pave surfaces separately or in connection with any of the above works or projects, or
4. Furnish and install in the property fitting and fixtures enhancing the appeal.

### Construction Contractor

As Construction contractors we perform construction contracts. which include general contraction, subcontracting and specialty contracting and we engage in the following:

- Carpentry
- Landscaping
- Bricklaying
- Cement work
- Steelwork
- Plastering
- Drywall installation
- Sheet metal work
- Roofing
- Tile and terrazzo work
- Electrical work
- Plumbing
- Heating
- Air-conditioning
- Painting

Installation of floor coverings, such as:  
Linoleum  
Floor tile  
Wall-to-wall carpeting

### Building Construction

The **design personnel continuously receive training** through various **professional associations**.

Our team is experienced in **state-of-the-art designs in commercial & residential developments**.

Our work is all performed in conformance with **state regulations**. We are a leader in the **safe**





**and competitive construction** of housing and general building projects stretching from residential, commercial, warehouses, hotels and new **residential construction, to renovations and refurbishment.**

### **Building Renovations**

We provide each client with a detailed description of the renovation work we undertake.

The written estimate includes:-

**A complete description of the work that will be done.**

**The type and quality of materials that will be used**

**The project start and completion dates**

**Itemized costs and the total price**

**The required method of payment.**

### **Personnel Training**

Our staff is of the **highest caliber** in the region and they are constantly evaluated with a view of ensuring they keep to the standards set by **Jongonga General Buildings Renovation.**

The members of staff including our design personnel continuously receive **training** through various **professional associations.** Our team is experienced in **state-of-the-art designs** in commercial and residential developments.

Our work is all performed in conformance with various state and county regulations.

We also make sure that the **insurance** standards are maintained on all our sites and that the staff and materials are adequately insured while the **safety levels** are kept to the optimum. The result is that we have some of fewest accidents in the industry which continues to **motivate our staff;** enabling us to keep our client satisfaction in line with our motto of **delivering quality service.**





## Supplies Of Building Materials

Apart from supplying the building materials and fittings mentioned below we also provide transportation to various sites in Kenya. We have ready transport for clients who need to ferry their materials/goods.

Among the materials that we supply are the following:-

- Building stones and Bricks
- Iron Sheets and Roofing Tiles
- Lumber and Wooden Fittings
- Paint and Coating Accessories
- Windows and Aluminum Fittings
- Electric wiring and related Accessories
- River Sand, Cement, Ballast and Dust
- Doors(Wooden, Steel, Aluminum, Fiberglass)
- Flooring (Ceramic, Wooden, Concrete)
- Piping (PPR, PVC, Steel)
- Water Tanks, Bath Tubs, Basins and Sinks
- Tiles (Floor, Roof and Wall)
- Cabro, Channels, Culverts and Drainage
- Steel Bars, Twisted Steel, Steel Gates, Door Locks
- Various Hardware
- 

## Equipment

The firm owns the following equipment and uses them in facilitating speedy and timely execution of our contracts to the benefit of our esteemed clientele

**Concrete Mixer**

**Water Tank**

**Water Pump**

**Drum Roller**

**Pedestrian Roller**

**Trucks**

**Pick Up**

**Minibus**

**Excavator**

**Electric Drill**

**Welding Machine**

**Electric Cutting Machine**



## MAIN CONTACTS WITHIN THE FIRM:

### Director

Jacob O. Ngonga +254 711 796374

### Office Contacts

Cellphones:+254 763 374796

Mobile Phone:+254 789 725396

Emails:

[info@jongongacontractors.com](mailto:info@jongongacontractors.com)

Second Email: [jacob@jongongacontractors.com](mailto:jacob@jongongacontractors.com)

Third Email: [jongonga.jn@gmail.com](mailto:jongonga.jn@gmail.com)

Website: <http://www.jongongacontractors.com>

### SOCIAL MEDIA CONTACTS

Facebook: <https://www.facebook.com/Jongonga-Contractors-1547402265552882>

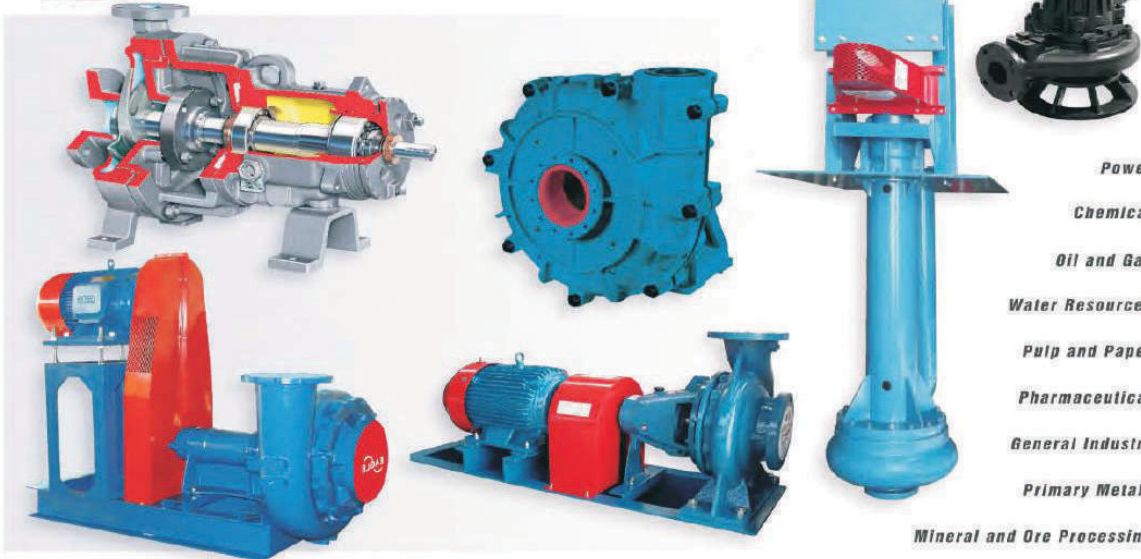
Twitter: <https://twitter.com/jacobngonga>

Google+: <https://plus.google.com/112640031206081795594/collections>

**TURBOFLUID**  
SOUTH AFRICA

**FLOWSERVE**

**EAGLE**



**PRODUCT INDUSTRY USES**

- Power
- Chemical
- Oil and Gas
- Water Resources
- Pulp and Paper
- Pharmaceutical
- General Industry
- Primary Metals
- Mineral and Ore Processing

**Turbofluid Head Office:**  
Tel: +27 31 700 2525  
+27 11 700 9793

**Gauteng Office:**  
Tel: +27 11 828 5538  
+27 86 567 3893

**Rustenburg Office:**  
Tel: +27 14 596 7491  
+27 86 245 3709

**Steelpoort Office:**  
Tel: +27 13 230 3823  
+27 13 230 3804

**Cape Town Office:**  
Tel: +27 21 527 0011  
+27 21 526 0300

**Secunda Office:**  
Tel: +27 17 638 1624  
+27 17 638 1733

# PROJECTS MAGAZINE

Website: [www.projects magazine.net](http://www.projects magazine.net)



**TRE  
ALTAMIRA**  
A CLS Group Company

**OPTRON**

## Mine site deformation monitoring with satellite InSAR

Satellite radar data provides remote measurements of ground deformation, ranging from millimetres to metres, over the entire mine site.



# Al-Hatim Decor

## *Who are we?*

Al-Hatim Décor is a young and dynamic company incorporated in 2007. It is already carving a niche in the building industry in specialising in decors and fit-outs in commercial and residential spaces.

We have a creative team for new and innovative ideas to add colours to your life. We offer you personalized services thus providing you with what you need. We specialize in elegant interior designs, trendy special effects and apply our artistic and intrinsic designs and colours using imported and local products.

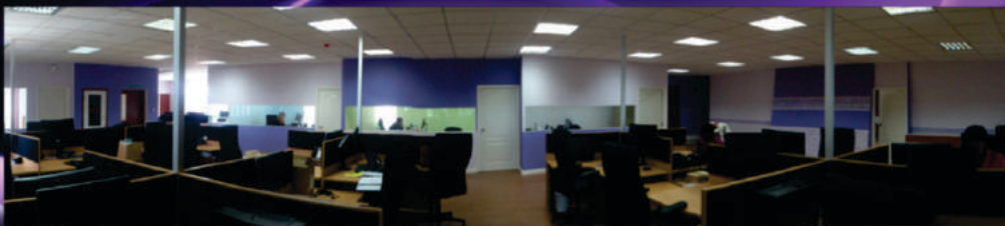


## *What we do ...*



AL-Hatim Decor provides you with turn-key solutions for interior spaces which begins with schematic drawings, space planning, furniture layout and 3D-Visuals.

With years of experience successfully designing and implementing space solutions, refurbishments and adding value to products and services, AL-Hatim Decor has excelled in exceeding customer expectations.



## Mission & Vision

### Our Mission

At Al-Hatim Décor, we redefine your space that will reflect your individual personality and style. We are delighted to offer you with our stylish interiors that will fit your budget and taste. We accomplish this by exposing your eye to decorative concepts and furnishings that you may not have considered before. We are happy to work with you on both small and large scale projects from a single room or an office, to an entire home or large commercial space.

### Our Vision

To create an environment that will interpret the essence of who you are and inject into a living space that flows smoothly in tandem with the natural rhythm of your life.



## Visuals





## Product & Services

### INTERIORS

Space Planning: Commercial & Residential  
3D Illustrations  
Furniture Layout  
Reflected Ceiling Plan  
Partitioning Solutions  
Special Effect Painting  
Flooring Solutions  
Lighting Solutions

### SOLUTIONS

Structured Cabling  
Access Control Systems  
CCTV Surveillance  
Audio Video System  
Telephony systems  
Alarm Systems  
Air Conditioning

### CONSULTANCY

Project Management  
Space Consultations  
Material Selection  
Color Scheme  
Workshops  
Event Planning  
Schematic Drawings  
I.T. Consultancy

Authorised Distributors of: Navona UK<sup>®</sup>, Silk Plaster<sup>®</sup>, Ritver Paints<sup>®</sup>, EcoMag Magnesia boards<sup>®</sup>  
InterColor LLC





## Redefining Your Space

### Contact Details



*Al-Hatim Decor*  
أل حاتم ديكور

P.o.Box 213, 00600, Nairobi, Kenya.

Tel: +254-722810367, +254-734169925, +254-738691575

E-mail: interiors@al-hatimdecor.com

solutions@al-hatimdecor.com

www.al-hatimdecor.com



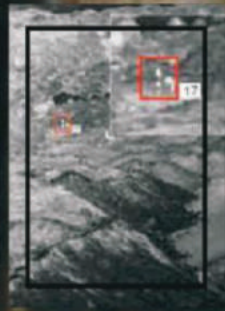




# SPOTTER

## World-First, World-Class Security for Open Cast Mines!

The Spotter is a world-first, world-class security solution. Designed specifically for remote regions that lack supportive infrastructures, this self-sustaining system includes a virtual perimeter camera solution, tracking real-time movement. High powered single PT Thermal Cameras are strategically placed, which intruders cannot hide from – giving management complete 360 degree situational awareness and piece of mind.



**CONTACT US FOR MORE INFO**

info@secusystems.co.za | +27 11 794 7834



# TASS ENGINEERING (PTY) LTD

TASS ENGINEERING has been actively involved in  
Structural and Architectural Steel Fabrication and Erection for  
50 YEARS



From small beginnings in 1968  
Tass Engineering has grown to  
become one of South Africa's  
leading  
Architectural and Structural  
Steel Contractors



Our steel is building the nation  
Our quality is building our reputation

**Tass Engineering - CRC Church - Roof Truss Project**



Contact details: Tel +27 (11) 975 0647 • Fax +27 (11) 970 1694 • E-mail [tasseng@mweb.co.za](mailto:tasseng@mweb.co.za).

[www.tassengineering.com](http://www.tassengineering.com)



# Complete Flooring

## Quality Flooring Solutions



Specialist suppliers and installers of  
quality carpets, wood laminates,  
engineered wood, vinyl and  
artificial grass.

We are proud to be associated  
with the construction of CHRISTIAN REVIVAL CHURCH [CRC]  
at corner of Riverbend and Witkopen Road, Noordhang, Randburg, in Johannesburg

☎ :+27 (0)11 791 4043

📍 Unit 11 Ferndale Commercial Park Cnr Rocky Rd and  
Struik Street Strijdom Park, Randburg

✉ E-mail: [tim@completeflooring.co.za](mailto:tim@completeflooring.co.za)

🐦 📘 📷 #styleineverystep