

PROQUESTS MAGAZINE

FEBRUARY/MARCH 2026

A-SHAK
CONSTRUCTION CHEMICALS

**Quality
Concrete
Solutions**

- Bonding Agents
- Chemical Anchors
- Concrete Bonding
- Concrete Crack Repairs
- Concrete Floor Hardeners
- Concrete Floor Repairs
- Concrete Repair Mortars
- Curing Compounds
- Epoxy Adhesives
- Epoxy Grout
- Floor Coatings
- Hypalon Bandage Systems
- Joint Sealants
- Non Shrink Grouts
- Pre Cast Repairs
- Shutter Release Oils
- Wall Coatings
- Water Proofing

Contact Us!
Tel: +27 11 822 2320
Fax: +27 11 822 2354
email: cindy@ashak.co.za



Chameleon

SOLUTIONS LTD



Zaf Holdings Warehouse, Baba Dogo Road 2 Nairobi
0703 500 547
solutions@chameleon.co.ke

WWW.CHAMELEON.CO.KE



CATALYST
Group of Companies

FIRAT

KODSAN
HOT WATER SYSTEMS



EVOLUTIONARY
ENERGY
SOLUTIONS



Authorized Distributor of

TRANE



HVAC

0703-500 547 | 0706-777 444 | solutions@chameleon.co.ke

HAROLD R. FENWICK & ASSOCIATES LTD: A Legacy of Excellence in Kenyan Quantity Surveying



Aga Khan University Centre & Student Hostel Kampala Uganda



Hotel Villa Rosa Kempinski Nairobi



Nova Apartments Muthangari Drive Nairobi



Residential House in Gilgil Nakuru County

For over half a century, Harold R. Fenwick & Associates Ltd. (HRFA) has been a cornerstone of the Kenyan construction industry, not merely as a participant but as a significant shaper of its trajectory. Established in 1972, this esteemed Quantity Surveying firm has consistently demonstrated a profound commitment to professionalism, integrity, and excellence, thereby setting benchmarks within the dynamic and evolving landscape of East African construction. Their enduring presence and influence underscore a legacy built on deep expertise and unwavering dedication.

A Foundation of Visionary Leadership and Enduring Principles

The genesis of HRFA is rooted in the visionary leadership of its founder, Mr. Harold Rae Fenwick. A distinguished figure in the Quantity Surveying profession, Mr. Fenwick brought a wealth of experience from both the private sector in Scotland and a prominent role as the Acting Chief Quantity Surveyor for the Kenyan Ministry of Works. Upon his retirement from Government service, he established his own practice in 1972, driven by a clear vision: to not only deliver exceptional Quantity Surveying services but also to actively contribute to the advancement and professionalization of the industry in Kenya [1]. His foresight laid the groundwork for a firm that would become synonymous with quality and reliability.

Leadership Transition, Sustained Growth & Achievements of The Firm Over The Last 50 Years

The continuity of this legacy over the last 50 Years was ensured through the leadership transition in 1988 to QS

Bashir H. Hajee who recently attained 50 Years as a Quantity Surveyor. Having joined the practice in 1975, QS Hajee rapidly ascended through the ranks, becoming an Associate in 1978 and a Partner in 1980. His eventual assumption of the role of Principal after Mr. Fenwick's retirement marked a new chapter of sustained growth and solidified HRFA's reputation as an industry leader. QS Hajee's extensive experience, coupled with his steadfast adherence to the firm's foundational principles, has been pivotal in navigating HRFA through decades of significant expansion and success.

In 1999 the Firm was awarded a Certificate of Merit by the Architectural Association of Kenya (AAK) for "Commendable Professional Services rendered for over 20 Years" In 2019, the Firm was awarded a Certificate of Excellence as Runners Up for the CoRE (Construction & Real Estate) Excellence Award in Quantity Surveyors category and a Certificate of Excellence as Runners Up for the CoRE Sustainability Award for the United Nations Office Development in Nairobi. In June 2020, the Firm was awarded a Trophy and a Certificate of Excellence as the Winner of the CoRE Excellence Award in Quantity Surveyors category. In 2014, QS Hajee was Nominated for a Lifetime Achievement Award and conferred a Certificate of Excellence by the Institute of Quantity Surveyors of Kenya (IQSK) for his contribution to the growth and development of Quantity Surveying in Kenya as well as a 1st Runner-up Award in the Mentorship and Training Category.

In 2020, QS Hajee was elected by The Institute of Quantity Surveyors of Kenya (IQSK) to their College of Fellows. In 2023, QS Hajee was elected by The Architectural Association of Kenya (AAK) to their College of Fellows.

A Comprehensive Suite of Services: Mastering the Construction Lifecycle

HRFA distinguishes itself by offering a comprehensive and meticulously structured range of services that span the entire lifecycle of a construction project. This holistic approach ensures that Clients receive expert guidance and support from the initial conceptualization through to project completion and Final Account settlement.

Pre-Contract Services

During the crucial Pre-Contract phase, HRFA's team engages in a series of detailed activities aimed at establishing a robust financial and operational framework for the project. These services are fundamental to informed decision-making and include:

- **Cost Planning and Estimating:** Providing crucial site advice, developing comprehensive cost plans, evaluating the cost implications of alternative design solutions, and generating accurate cost estimates. This proactive approach allows Clients to understand and control project expenditures from the outset.
- **Bills of Quantities (BoQ) Preparation and Pricing:** Meticulously preparing and pricing Bills of Quantities, which serve as the bedrock for transparent tendering and accurate cost control throughout the project.
- **Value Engineering:** Implementing systematic methodologies to optimize project value by analyzing functions, costs, and performance, thereby achieving necessary functions at the lowest lifecycle cost consistent with required performance, quality, reliability, and safety.
- **Tender Invitation and Analysis:** Managing the tender process, from inviting bids to conducting thorough analyses of received tenders, culminating in the preparation of detailed tender reports that guide Client's selection.
- **Contract Document Preparation:** Drafting and finalizing comprehensive Contract Documents that clearly define the scope, terms, and conditions, safeguarding the interests of all parties involved.

Post-Contract Services

Once a project commences, HRFA's Post-Contract services focus on rigorous cost control, financial management, and contractual administration to ensure the project remains on track and within budget. Key services in this phase include:
Cash Flow Forecasting:

- **Site Meeting Attendance and Inspections:**

Regularly attending site meetings and conducting inspections to monitor progress, address issues, and ensure compliance with contractual obligations.

- **Processing Contractor's Applications for Payment:** Diligently processing and verifying contractor applications for payment, which involves meticulous verification of work completed and materials on site, as well as re-measurements and revaluations.
- **Variation Assessment:** Expertly assessing contractor's claims for variations to the contract, providing detailed reports and recommendations to Clients.
- **Financial Appraisal Preparation:** Preparing regular Financial Appraisals that offer a clear and concise overview of the project's financial health and projections.
- **Contractual Advice:** Offering expert advice on contractual issues, helping Clients navigate complexities and resolve disputes efficiently. This integrated and detailed approach ensures that projects are not only completed within budget and on time but also meet the highest quality standards, providing Clients with true value for their investment and peace of mind [2].

A Portfolio of Landmark Projects: Shaping Kenya's Skyline

HRFA's extensive project portfolio stands as a powerful testament to the firm's remarkable versatility, technical prowess, and profound impact on Kenya's built environment. Over decades, they have successfully delivered a diverse array of projects, ranging from iconic commercial and luxurious residential developments to critical industrial complexes and prestigious hospitality establishments. This breadth of experience underscores their capability to manage projects of varying scales and complexities, consistently delivering exceptional results. Some of their most notable and publicly recognized projects include:

Aga Khan University Centre & Student Hostel AND Aga Khan University Hospital: Prestigious Educational and Medical Developments in Kampala, Uganda an evidence of the Firm's ability to provide their exemplary services in neighboring countries.

- **Amref International University:**

An accredited Institution of higher learning which illustrates HRFA's competence on a project of this magnitude.



WOOTA PUBLISHERS T/A PROJECTS MAGAZINE

Kenya Office

CallUs:+254 758235164 P.O.BOX 178--20114
Kabazi, Nakuru Kenya

Email: info@projectsmagazine.co.ke

Website: www.projectsmagazine.co.ke

Mon – Fri: 9:00 AM – 5:00 PM

Uganda Agent

Hawk Eye Technologies Tel: +256 752 520 158
Plot no.6Entebbe Road, Kampala, Central,
00256,Uganda Mon – Fri: 9:00 AM – 5:00 PM

South Africa Office

Mount Everest Publisher(pty)Ltd
Tel: +27 78 692 0826 Fax: +2786601 9195
Mon – Fri: 9:00 AM – 5:00PM

CONTRIBUTIONS

The editor welcome news items, press releases, articles and photographs relating to the Construction Industry. These will be considered and, if accepted, published. No responsibility will be accepted should contributions be lost, damaged or incorrectly printed.

© All rights reserved

**Agga Khan University Centre & Student Hostel
AND Agga Khan University Hospital:
Prestigious Educational and Medical**

Amref International University: An Accredited

Institution of higher learning which illustrates HRFA's competence on a project of this magnitude.

Villa Rosa Kempinski Hotel: A landmark five-star luxury hotel in Nairobi, showcasing HRFA's involvement in high-end Hospitality Developments.

Sameer Business Park: A modern, expansive Business Park that serves as a hub for numerous multinational corporations, reflecting the firm's expertise in large-scale Commercial Developments.

United Nations Offices: A significant and complex development that highlights HRFA's capacity to handle projects of International importance and stringent requirements.

English Point Marina: A prestigious waterfront development in Mombasa, demonstrating their involvement in unique and high-value Coastal projects.

These among other Projects Undertaken can be viewed by visiting their website: www.fenwick.co.ke

Furthermore, HRFA has been involved in a wide spectrum of project types, including industrial complexes, factories, warehouses, workshops, semi-industrial buildings, housing estates, multi-storey apartments, town halls, banks, markets, bus-parks, sports clubs, schools, and private residences. Their geographic reach extends beyond Kenya, with successful project undertakings in Uganda and Zanzibar, further solidifying their reputation as a leading regional player in Quantity Surveying Services. This impressive track record reinforces HRFA's position as a trusted and indispensable partner in the construction industry, capable of transforming ambitious visions into tangible realities.

Shaping the Future of the Profession: Advocacy and Nurturing Talent

Beyond its impressive project portfolio, HRFA demonstrates a profound and active commitment to the future of the Quantity Surveying profession in Kenya and the broader East African region. The firm has long maintained a policy of actively mentoring and training young quantity surveyors, recognizing the critical importance of practical experience in complementing academic knowledge. This dedication to nurturing emerging talent provides aspiring professionals with invaluable on-the-job training and exposure to cutting-edge Quantity Surveying software and methodologies. Many of these interns are subsequently offered permanent positions, enriching HRFA's own team and significantly contributing to the overall growth and development of the profession across Kenya.

QS Bashir H. Hajee, as Principal, is a vocal and influential advocate for the modernization of the industry's regulatory framework. He consistently advocated and emphasized the urgent need for an updated Architects & Quantity Surveyors Act (Cap 525), which, having been enacted

in the 1960s, was recently amended and gazetted to conform to the current market conditions. QS Hajee highlights how this legislative vacuum was contributing to confusion regarding professional remuneration creating an environment where unethical practices could

While challenges persist, particularly concerning legislative reform, the establishment of regulatory bodies such as the National Construction Authority (NCA) is viewed as a positive step towards enhancing oversight and accountability within the construction sector, ultimately aiming to reduce incidents like building collapses. Concurrently, the continuous improvement in the quality of Quantity Surveying training offered by institutions like the University of Nairobi and other universities ensures a steady supply of highly skilled and tech-savvy professionals. QS Hajee proudly notes that the quality of young Kenyan professionals can indeed match the best in the world, a testament to both the educational institutions and the practical training provided by firms like HRFA.

A Legacy of Trust and Enduring Excellence



Mr. Harold Rae Fenwick

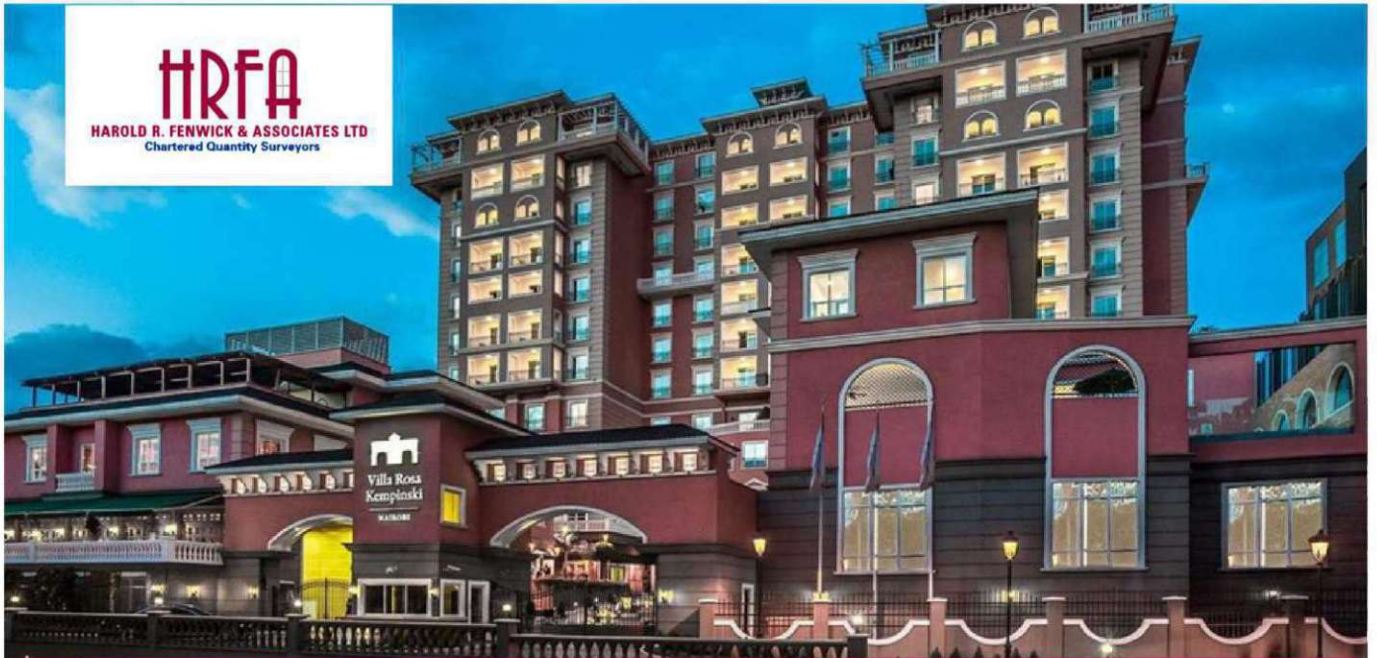
In an industry characterized by constant evolution and increasing complexity, Harold R. Fenwick & Associates Ltd. has remained a steadfast presence, serving as a symbol of trust and a benchmark for enduring excellence. With a legacy meticulously built on a solid foundation of extensive experience, an unwavering commitment to Client's satisfaction, and a forward-looking vision for the future, HRFA is exceptionally well-positioned to continue its journey as a leading and influential force in the Kenyan construction industry for many years to come. Their profound contributions extend far beyond the successful completion of individual projects; they actively shape the professional standards, foster talent development, and significantly influence the developmental trajectory of Quantity Surveying Services across East Africa.



HAROLD R. FENWICK & ASSOCIATES LTD



HAROLD R. FENWICK & ASSOCIATES LTD
Chartered Quantity Surveyors



Building Futures. *Defining Excellence*

Your Trusted Partner in Quantity Surveying Across East Africa Since 1972

QUANTITY SURVEYING WITH LEGACY & PRECISION

For over five decades, **Harold R. Fenwick & Associates Ltd** has delivered independent, accurate, and value-driven quantity surveying services across East Africa.

Our work spans landmark hospitality developments, commercial, office parks, residential estates, and major infrastructure projects. We combine technical rigor with deep industry insight to ensure our clients achieve cost certainty, contractual clarity, and project success at every stage.

50+ Years of *Trusted Excellence*

Established in 1972, **Harold R. Fenwick & Associates Ltd** has built a reputation founded on integrity, professionalism, and consistency.

Beyond delivering projects, we remain committed to mentoring and nurturing the next generation of quantity surveying professionals within the region.

OUR PROFESSIONAL SERVICES

Pre-Contract Services

- Cost Planning & Feasibility Studies
- Bills of Quantities (BoQ) Preparation
- Value Engineering & Cost Optimization

Post-Contract Services

- Financial & Cost Control
- Contract Administration
- Site Supervision & Certification



Partner with Excellence. Build with Confidence.

Sri Sathya Sai Center Waiyaki Way, Nairobi.
fenwick@fenwick.co.ke, haroldfenwick@gmail.com
TEL: +254 (0) 715 555 412

Mombasa, Jubilee Arcade, Moi Avenue, Mombasa
TEL: +254 (0) 41 2318 722
mombasa@fenwick.co.ke, harofen@yahoo.com
+254 (0) 733 377 190



We are happy to be associated with Special Feature on
HAROLD R. FENWICK & ASSOCIATES LTD's
Legacy of Excellence in Kenya Quantity Surveying



Mr. Bashir was the QS for
both Tulip House and
Storage Central Building
on Mombasa Road

CONTACT US: +254 787808880 ▪ info@tulipafrialtd.com;
PO BOX 43461-00100 Nairobi; Tulip House, Off Mombasa Road.



ARK CONSTRUCTION LTD

Building Kenya with Integrity, Precision & Purpose

We are happy to be associated with the special feature on

**HAROLD R. FENWICK & ASSOCIATES LTD'S
Legacy of Excellence in Kenya Quantity Surveying.**

Ark Construction Ltd proudly recognizes and celebrates the outstanding contribution of Harold R. Fenwick & Associates Ltd to Kenya's built environment.

Their decades of excellence in quantity surveying, cost management, and project advisory continue to set benchmarks for professionalism, integrity, and value driven construction.

As industry partners committed to quality delivery and sustainable development, we share a common vision Building Projects that stand the test of time while upholding the highest professional standards



ABOUT ARK CONSTRUCTION LTD

- Building Construction and Associated Civil Works
- Office and Shop Fit-Outs Works
- Aluminium and Glazing Works
- General Renovation Works
- Metal, Timber and Joinery Fabrication Works
- Project Execution and Management



Quality without Compromise



Professional Collaboration



Transparent Delivery



Sustainable Practices

ARK CONSTRUCTION proud to stand with industry leaders shaping Kenyas construction legacy.



ARK CONSTRUCTION LTD



PARBAT SIYANI CONSTRUCTION LIMITED

**WE ARE PROUD TO BE ASSOCIATED WITH
HAROLD R.FENWICK & ASSOCIATES LTD, IN THEIR
50+YEARS LEGACY OF EXCELLENCE IN QUANTITY
SURVEYING IN KENYA**

BUILDING KENYA'S FUTURE . STRONGER, SMARTER, GREENER

At the forefront of Kenya's built environment since 2001, Parbat Siyani Construction Limited is a trusted name in civil engineering, structural building, and project delivery. With deep roots in East Africa's construction heritage and a commitment to quality, innovation and integrity, we bring visions to

WHY CHOOSE PARBAT SIYANI?

Proven Multi-Sector Expertise

Extensive experience delivering commercial, residential, institutional, and industrial projects with technical precision, on schedule and within budget.

End-to-End Construction Solutions

Full-scope services from planning and site management to structural works, civil engineering, fit-outs, joinery, and fabrication — executed with strict quality control.

Client-Centric Approach

Collaborative project delivery that prioritizes practicality, durability, cost efficiency, and superior outcomes.

Certified & Dependable

Category "A" contractor accredited by Kenya's Ministry of Roads & Public Works, recognized for compliance, reliability, and strong long-term client partnerships.



OUR FOOTPRINT

Based in Nairobi, Parbat Siyani Construction Limited is strategically positioned to serve clients throughout Kenya and the broader East African region.

Let's Build Together.

**Location: First Parklands Avenue, Nairobi
P.O Box 10748-00100 Nairobi, Kenya.**

**Tel:+254 20 2658134/35
Mobile: +254 722 522676
+254 731 337001
FAX: +254 20 2658136**

**Email: pscl@seyani.com
www.seyani.com**



Allied Plumbers Limited

We are happy to be associated with Special Feature on
HAROLD R. FENWICK & ASSOCIATES LTD's
Legacy of Excellence in Kenya Quantity Surveying



We offer Professional plumbing and mechanical engineering solutions tailored to your needs.



Quality

We deliver excellence in every project, using premium materials and skilled craftsmanship.



Integrity

We operate with honesty and transparency in all our business dealings.



Reliability

We honor our commitments and deliver projects on time and within budget.



Innovation

We embrace new technologies and methods to provide cutting-edge solutions.

CONTACT US: +254 727 531 040 EMAIL: alliedplumbers@jandu.biz

HOTLINE: +254 727 531 040 LOCATION: Maasai Rd, off Mombasa Road, Nairobi, Kenya



East Africa Infrastructure Services Limited

INTEGRATED MEP CONTRACTOR

EAISL IS A MEP CONTRACTOR OFFERING:



Mechanical Installation & Services



Plumbing & Drainage Installation & Services



Electrical Installation & Services

EAST AFRICA INFRASTRUCTURE SERVICES LIMITED



**WE ARE HAPPY TO BE ASSOCIATED WITH SPECIAL FEATURE ON
HAROLD R. FENWICK & ASSOCIATES LTD**
Legacy of excellence in Kenya Quantity Surveying

📍 Unit 15 Aztec Business Park, Babadogo | 📞 +254722756005 / +254717072328

🌐 www.eaisl.com | ✉ info@eaisl.com



Tononoka Engineering Limited

CELEBRATING A **50 YEAR** LEGACY OF EXCELLENCE

WITH **HAROLD R. FENWICK & ASSOCIATES LTD**

Tononoka Engineering Limited (formerly David Engineering Kenya Limited) stands as a premier leader in East Africa's industrial landscape. Since 1998, the company has built an unrivaled reputation for quality, reliability, and efficiency, delivering world-class fabrication and structural solutions across the region.



At Tononoka Engineering we specialize in :

- Warehousing.
- Roofing Works & feed mill structures.
- Painted and galvanised pressed steel tanks and towers.
- Cool vents and Insulation.
- Motorised and or manual roller shutter doors.
- Hinged doors and sliding doors.
- Steel Mezzanine floors and petrol station canopies.

....and more



Email Us:

info@Tononokasteels.com

Contact Us:

+254 719 619877/8

Tel: +254 20 2513939, 3541439,
2513942, 2513962, 2376339.



Address:

P.O. Box 158 -00507 Nairobi
Tononoka Rolling Mills
Complex, phase 3, Komarock
Road, Dandora Nairobi, Kenya

CONGRATULATIONS

We are delighted to be associated with
HAROLD R. FENWICK & ASSOCIATED LTD.
Celebrating a remarkable legacy of excellence in
Quantity Surveying across Kenya.



LAXMANBHAI
CONSTRUCTION LTD.
BUILDING & GENERAL CONTRACTORS

HEAD OFFICE:

11th Floor | Laxcon Plaza | Swaminarayan Road

P.O. Box 44706 - 00100 GPO | Nairobi | Kenya

Tel: +254 20 26674865/7 Mobile +254 721 378789

E-mail: info@laxconke.com | website: www.laxconke.com

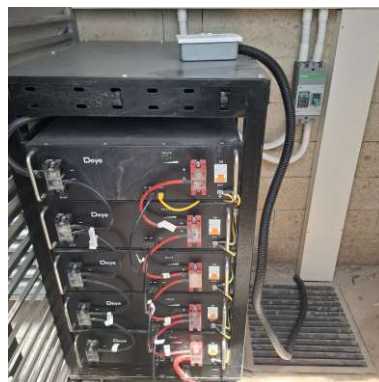




**GAMMA DELTA
EASTERN AFRICA LTD**



*We are happy to be associated with Special Feature on
HAROLD R. FENWICK & ASSOCIATES LTD's
Legacy of Excellence in Kenya Quantity Surveying*



P. O. Box 28088 (00200), Nairobi, Kenya.
Mashiara Park, Kaptagat Road, Loresho.

Cellphone: +254 728 606 578

Email: info@gammadelta.co.ke

CHANILALL PARTNERSHIP ARCHITECTS

SRI SATHYA SAI CENTRE, WAIYAKI WAY/ MUSA GITAU ROAD, WESTLANDS
P.O. BOX 1220 SARIT 00606, NAIROBI, KENYA
TELEPHONE: +254 722 739 577
e-mail: info@chanilallpartnership.com
www.chanilallpartnership.com



WE ARE PROUD TO BE ASSOCIATED WITH
HAROLD R. FENWICK & ASSOCIATES

Kenya's Urban Transformation: March 2026 Project Pulse

Kenya's skyline is shifting at a record pace as the government's flagship **Affordable Housing Program (AHP)** hits a critical delivery milestone this March. From the bustling streets of Nairobi to the burgeoning tech hubs of Konza, the vision of dignified living is becoming a tangible reality for thousands.

Mukuru & Kabete: From Blueprints to Keys

The spotlight this month falls on the Mukuru Kwa Njenga Housing Project, a massive 13,248-unit development nearing its final handover. Following the successful distribution of over 5,600 homes in late 2025, the remaining blocks are slated for completion by the end of **March 2026**.

Simultaneously, the **Kabete Social Protection Project** has transitioned into high gear. Following a high-level inspection on **February 25, 2026**, contractors have accelerated the construction of 18 residential blocks, which include integrated amenities like a clubhouse and kindergarten, designed to foster a holistic community environment.

Rewarding the Frontline

In a strategic policy shift, the government has officially prioritized the nation's protectors. 20% of all units across these projects are now reserved for security personnel, including the KDF, National Police, and NYS. To make homeownership attainable, these officers can now access specialized low-interest financing at a fixed rate of 3% per annum.

A Growing Nationwide Footprint

Beyond the capital, the momentum is undeniable:

- **National Scale:** Approximately **320,000 units** are currently active nationwide.
- **Economic Impact:** The program continues to be a primary driver of the "Hustler" economy, employing over 160,000 youths and stimulating the local Jua Kali sector for doors, windows, and hinges.

As the handover ceremonies approach, the AHP is proving to be more than just a construction project it is a blueprint for social equity and economic stimulus.

The LAPSSET Blueprint: Engineering Africa's Most Ambitious Economic Corridor (2026)



The Sh2 Trillion Vision in Motion

As of early 2026, the Lamu Port-South Sudan-Ethiopia-Transport Corridor (LAPSSET) has transitioned from a conceptual "flagship project" into a massive, multi-modal industrial reality. Spanning over 1,000 kilometers and involving a total investment of over Sh2 trillion (\$15.4 billion), LAPSSET is the most ambitious infrastructure project in the history of East and Central Africa. It is being integrated into the global supply chain.

1. Lamu Port: The Gateway to the North

At the heart of the corridor is the **Lamu Port at Manda Bay**. Unlike the congested Port of Mombasa, Lamu is a deep-water port capable of handling the world's largest "Post-Panamax" vessels.

- **Operational Scale-Up (2026):** By 2026, the first three berths are fully operational and serving as the primary transshipment hub for the region. Construction is currently active on **Berths 4 through 9**, which are being developed through a **Public-Private Partnership (PPP)** model involving a consortium of international maritime investors.
- **The Special Economic Zone (SEZ):** Surrounding the port, 2026 marks the groundbreaking for the **Lamu Industrial City**. This SEZ is designed to host fish processing plants, fruit canneries, and livestock export yards, ensuring that the port exports finished "Made in Kenya" goods rather than just raw materials.

2. The Highway Arteries: Paving the Savannah

The 2026 LAPSSET roadmap is defined by the completion of massive road "loops" that connect previously isolated towns.

- **The Lamu-Garissa-Isiolo Highway:** This 537km stretch is the "spine" of the project. In 2026, the final bitumen surfacing of the **Isiolo-Modogashe** segment is underway. This highway allows trucks to move cargo from Lamu Port to the central highlands in under 12 hours, a journey that previously took days over dirt tracks.

3. The Oil and Gas Frontier: The Pipeline Component

A critical pillar of the Sh2 trillion vision is the **LOKICHAR-LAMU CRUDE OIL PIPELINE (LLCOP)**.

- **Construction Status (2026):** After years of negotiations with joint venture partners, the 824km pipeline from the Turkana oil fields to the Lamu Port is under active construction. The 2026 phase involves the laying of the "insulated" pipeline, necessary because of the waxy nature of Turkana's crude oil.
- **Energy Independence:** The revenue from these exports is being earmarked for a Sovereign Wealth Fund, designed to finance the remaining components of the LAPSSET project without further external borrowing.

4. Regional Integration: The Ethiopia and South Sudan Links

LAPSSET is a continental project. In 2026, the diplomatic and technical synchronization between Nairobi, Addis Ababa, and Juba is at an all-time high.

- **Ethiopia Connection:** The Ethiopian government has completed its side of the highway to the Moyale border and is in 2026 finalizing the **Standard Gauge Railway (SGR) feasibility study** that will eventually link Addis Ababa to Lamu.

5. Challenges and Environmental Sustainability

Executing a project of this scale in 2026 comes with significant headwinds.

- **Environmental Protection:** The LAPSSET Authority is under intense scrutiny to protect the fragile Lamu mangrove ecosystems. In 2026, a "Blue Carbon" initiative is active, where for every hectare of port development, two hectares of mangroves are replanted in protected zones.
- **Social Inclusion:** To prevent the alienation of local communities, the 2026 strategy includes the **"Scholarship for 1,000 Youth"** program, ensuring that locals from Lamu, Garissa, and Turkana are trained as the engineers and pilots who will operate the corridor.



NCAI

RADIANT POWER SYSTEM

Registered Electrical Contractors



Thakkar brothers



Ojjo Apartments



Ruaka Apartments



Trident Estate



Adams mosque



South Park

Specialist in:

- Commercial Developments
- Industrial Developments
- Warehouses and Business parks
- Hospitals and Clinics
- Apartment Blocks
- Residential estates
- Educational Institutes
- Hotels, Restaurants and Lodges
- Refurbishment and fit out projects

Installation Of:

- Power and Lighting
- LV Switchgear and Standby
- Generators
- Fire Alarms Systems
- AVR & Surge Protection
- Data/Telephone Cabling



13- Office Suits,
P O Box - 39130 - 00623.
Parklands, Nairobi, Kenya.
+254 772 762 743
+254 738 948 707

info@rpskenya.co.ke
www.rpskenya.co.ke

Building Chemistry: How A.Shak Keeps South Africa's Concrete Strong



From a single release oil in 1958 to a full catalogue of construction chemicals and specialist concrete solutions, **A.Shak Construction Chemicals (Pty) Ltd** has become synonymous with quality, technical reliability, and innovation. Its journey represents the evolution of South Africa's construction chemical industry — where material science meets practical site performance.

A Legacy Built on Chemistry and Trust

When the finish of a cast, the bond between old and new concrete, or the longevity of an industrial floor is on the line, builders turn to chemistry. **A.Shak Construction Chemicals** has been a trusted name in South Africa's construction sector since the late 1950s. Its extensive range of bonding agents, waterproofing systems, mould release oils, and curing compounds

continues to play a vital role in building infrastructure across the region.

By maintaining strong relationships with contractors, architects, and engineers, A.Shak has secured its position as one of South Africa's leading construction chemical manufacturers. Its focus on reliability, consistency, and technical support has built lasting trust across generations of industry professionals.

From Release Oils to Construction Solutions

A.Shak began its journey as a supplier of shutter release oils for the precast concrete industry. Over the years, the company expanded its offering to include bonding agents, cementitious admixtures, and waterproofing solutions — reflecting the changing needs of an evolving construction industry.

Its continuous investment in research and product development has positioned A.Shak as a go-to provider for contractors seeking proven solutions





that perform under real-world conditions.

Product Spotlight

- **PlasterKey** – The market-leading water-based bonding aid that eliminates hacking and ensures strong adhesion on smooth surfaces.
- **TileRite** – Professional-grade tile cleaners, sealants, and finishing solutions that simplify post-installation maintenance.
- **Waterproofing Systems** – Flexible and cementitious waterproofers ideal for basements, water tanks, and roofs.
- **Epoxy Floor Systems** – Multi-layer, abrasion-resistant coatings that ensure longevity and hygiene in industrial and food-processing spaces.
- **Grouts, Anchors & Repair Mortars** – Structural-grade formulations used to reinforce and restore concrete integrity.

Technical Expertise and Tested Performance

A.Shak invests heavily in laboratory testing and



SAPIENSTONE

dress your kitchen

SURFACES
ACTIVETM
design for a better life

GREEN

FROM

FACTORY TO FIXTURE

SapienStone and ACTIVE technology are engineered and manufactured in the first **ZERO emissions** factory of its kind, offering architects, interior decorators and the public, the **opportunity to make more conscious decisions** when selecting materials. **ACTIVE SURFACES effectively contributes to a better quality of life**, in aesthetically pleasing and healthier environments.



Zero Emissions



Anti-viral



Anti-bacterial



Anti-odour



Anti-pollution



Self-cleaning





Sustainability and Future Growth

Sustainability is increasingly central to construction, and **A.Shak** is taking proactive steps to reduce its environmental impact. Its transition toward water-based and low-VOC products aligns with global environmental standards while supporting South Africa's move toward greener, more efficient construction practices.

Looking ahead, A.Shak remains focused on research, innovation, and training. New product formulations targeting green building certifications, improved energy efficiency, and local sourcing of raw materials are part of its strategic roadmap.

By combining legacy, technical knowledge, and forward-thinking design, **A.Shak Construction Chemicals (Pty) Ltd** continues to build South Africa's construction future on a foundation of chemistry and trust.

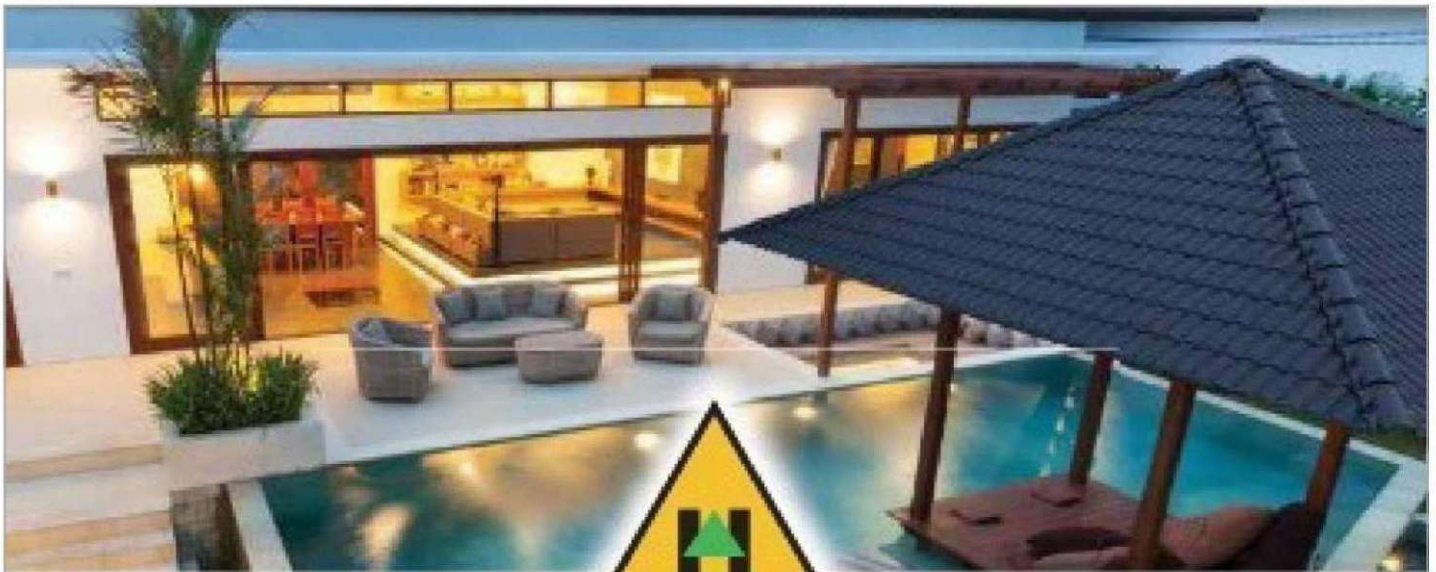
Contact Information

A.Shak Construction Chemicals (Pty) Ltd

Website: www.ashak.co.za

Email: info@ashak.co.za

Phone: 011 822 2320



HARVEY TileEco² ®
A DIVISION OF MACSTEEL

The green roof tile

Welcome to the future of roofing – a technological breakthrough from Harvey Roofing Products: the Harvey EcoTile®.

Harvey EcoTile® is a mineral composite roof tile. By utilising 98% waste material, Harvey EcoTile® is 100% recyclable yet provides superior functional benefits to other roofing options.

Harvey EcoTile's® technological design advantage ensures an interlocking, lightweight tile that is low on maintenance, weatherproof and virtually unbreakable in normal use.

Your building's roof is one of its most important elements in function, aesthetics, surface area and investment. Increase its functional performance and green credentials with one innovative product – Harvey EcoTile®.



Lightweight



Low Maintenance



Durable



Weatherproof



Attractive



Easy to Install



Paintable



SANS 10400-T



Waste Material



100% Recyclable



Waterless



Community Projects



Harvey Roofing Products
A DIVISION OF MACSTEEL

Tel: +27 11 741 5600

www.harveyroofingproducts.co.za

A Deep Dive into the KDF's Multi- Billion Shilling Accommodation Project (2026)

As of early 2026, Kenya is witnessing a national effort to address a critical issue of national security and troop welfare: decent housing for the Kenya Defence Forces (KDF). For years, KDF personnel across the ranks lived in often dilapidated, colonial-era housing, a situation deemed unacceptable by military leadership. The Kenya Defence Forces Residential Accommodation Project is a massive, multi-billion shilling initiative designed to construct 3,069 modern housing units across four strategic military bases: Nairobi, Laikipia, Mombasa, and Nakuru. This project is unique for its scale, its urgency, and its innovative financing model, which bypasses traditional government expenditure through a Public- Private Partnership (PPP) framework.



The PPP Model: Innovation in Infrastructure Financing

This project serves as a landmark case study for how the Kenyan government is leveraging private capital to meet public needs without immediately straining the national budget. The initiative is structured under a Build-Transfer-Operate (BTO) or similar long-term concession model.

- **Private Sector Execution:** A consortium of private developers, including local Kenyan firms and international partners, is responsible for the design, construction, and often the maintenance of the facilities for an agreed period (e.g., 15-25 years).
- **Government Payments:** The Ministry of Defence will make staggered payments to the concessionaire over the project's lifespan, often referred to as "availability payments." This spreads the cost and ensures ongoing maintenance standards are met.

The Multi-Site Construction Blitz (2026)

The project is executed simultaneously across four diverse geographic and operational command centers.

1. Nairobi: The Defence Headquarters Hub

In the capital, the focus is on senior officer accommodation and barracks near key command centers.

- **Location:** Sites in areas like Kahawa Barracks and Defence Headquarters environs.
- **2026 Status:** Construction here is in an advanced stage, with several multi-story apartment blocks already "topped out" (reaching maximum height) and interior fit-outs commencing.

2. Laikipia: The Air Force Command Center

Laikipia is home to the critical Laikipia Air Base (LAB).

- **Location:** Nanyuki and surrounding KDF land.
- **2026 Status:** This site is focused on creating a self-contained community for Air Force personnel and their families.

3. Mombasa: The Naval Base and Coastal Command

Housing in Mombasa is vital for the KDF's maritime operations and the protection of the Port of Mombasa.

- **Location:** Mtongwe Naval Base and Nyali Barracks environs.
- **2026 Status:** Construction faces unique coastal engineering challenges (salinity, high water table). In 2026, foundation work is complete, and structural frames are rapidly rising.

4. Nakuru: The Central Regional Command (Local Focus)

For residents in and around Nakuru, this component of the project has a direct local impact. Nakuru serves as a crucial regional military hub.

- **Location:** Lanet Military Barracks.
- **2026 Status:** The local Nakuru economy is benefiting directly from the procurement of construction materials (cement from PPC Western Cape Plant, steel, etc.) and the temporary employment of thousands of local laborers and contractors.

The 2026 Outlook and Final Impact

By late 2026, significant handover of the first completed units is expected to begin, primarily in Nairobi and potentially Nakuru. The completion of these 3,069 units will drastically improve the morale and well-being of KDF personnel and their families, reducing the financial strain on individual officers for housing and allowing them to focus fully on national security mandates.

The KDF Residential Accommodation PPP is a powerful statement of intent a demonstration that Kenya can deliver large-scale, essential public infrastructure projects through innovative financing models, securing the home front while redefining the nation's construction capabilities.



GREEN RUNS IN OUR FIBRES

High
performance
product
properties

Lasting Strength with fibre cement

▶ Everite Building Products has over the years established a reputation for producing a variety of outstanding quality products which have been used in a wide range of external and internal applications.

Nutec is the registered name for products manufactured without asbestos as a raw material. Nutec fibre cement products are manufactured using a mixture of cellulose fibre, cement, silica and water.

Everite is renowned for its comprehensive range of Nutec Roofing and Cladding Solutions and includes fibre-cement roofing, cladding, ceilings and building columns amongst others.

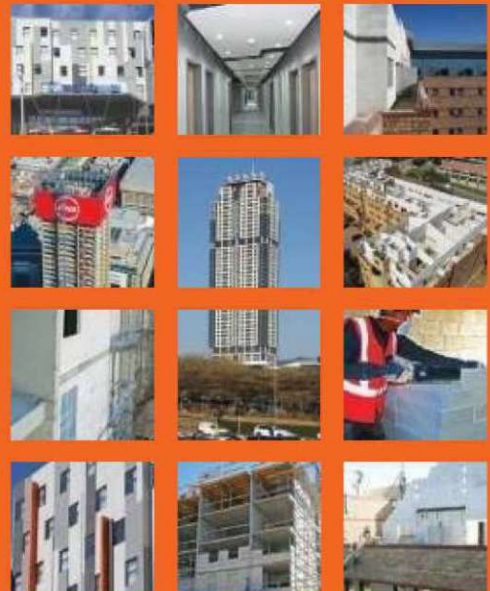
Nutec fibre-cement high performance properties and added benefits include: the use of safe renewable fibres; considerable tensile strength with enhanced dynamic load bearing properties; excellent thermal properties; water-and wind resistance; hail resistance; fire resistance and resistance to fungus, rodents and acid.



▶ Everite Building Products, is an appointed licensee by the Xella Group to manufacturer Hebel Autoclaved Aerated Concrete (AAC). Everite Building Products is the only manufacturer of AAC in Africa.

AAC as a building material has gained a considerable share of the international construction market since its inception in 1923 in Sweden and today maintains its reputation of the building material of the future. It is viewed as a revolutionary material that offers a unique combination of strength, light-weight, thermal insulation, sound absorption, unsurpassed fire resistance and unprecedented ease of construction.

Since commissioning the AAC plant in 2017, Everite Building Products has enjoyed considerable success in specification of the product to landmark projects in South Africa.



www.everite.co.za Info : 0861 333 835

The Pulse of Silicon Savannah: Konza Technopolis and the 2026 AI Frontier



The Intelligence of a City: Phase 1 Maturity

As of January 19, 2026, the dream of a "smart" city in the Kenyan plains has moved from a construction site to a living, digital organism. Konza Technopolis, located 60km south of Nairobi, is currently in the final intensive stretch of its Phase 1 infrastructure development. While 2025 focused on the completion of the "hard" infrastructure roads, water treatment, and power 2026 is the year of the "Soft Infrastructure" and the full integration of Artificial Intelligence (AI) into the city's DNA.

Managed by the Konza Technopolis Development Authority (KoTDA), the project is no longer just about building offices; it is about creating a self-governing urban environment that serves as the R&D lab for the African continent.

1. The Brain of the City: The Intelligent Operations Centre (IOC)

The most significant milestone of 2026 is the commissioning of the **AI-powered Intelligent Operations Centre (IOC)**. Located within the Tier III National Data Centre, the IOC acts as the central nervous system for Konza.

- **Real-Time Urban Management:** By mid-2026, the IOC is actively monitoring every aspect of the city's vital signs. Using a network of thousands of IoT (Internet of Things) sensors, the AI system manages traffic flow, detects water leakages in the subterranean utility tunnels before they become bursts, and optimizes the city's power consumption from the national 10,000 MW grid.
- **Predictive Maintenance:** The AI algorithms at the IOC are now capable of "predictive maintenance." For the first time in a Kenyan city, street lights and utility pumps are serviced *before* they fail, based on data patterns analyzed by the IOC, ensuring near 100% uptime for city services.
- **Public Safety:** The 2026 rollout includes AI-assisted emergency response. The IOC can automatically detect traffic accidents or security anomalies via smart cameras and dispatch emergency services via the most efficient route, bypassing congestion.

2. The Skyways: Drone Corridors and Urban Air Mobility

In 2026, Konza is taking its infrastructure into the third dimension. The city has officially launched its first dedicated **Drone Corridors**, a move designed to make Konza the logistics and medical-testing hub of East Africa.

- **Last-Mile Medical Delivery:** Construction and testing are active on drone launchpads integrated into the city's health facilities. In 2026, these drones are used for the rapid transport of blood samples and specialized medicines between Konza and the surrounding Machakos and Makeni counties.
- **E-Commerce Integration:** By late 2026, the first "Smart Warehouse" in Konza's industrial zone is expected to be fully operational, utilizing the drone corridors for automated inventory transfers.

3. The Korea-Kenya Science and Technology (KAIST) Campus

A city without talent is just a collection of buildings. In 2026, construction is peaking on the **Kenya-AIST (Advanced Institute of Science and Technology)** campus.

- **Research Focus:** Modeled after the world-renowned KAIST in South Korea, this institution is set to open its first laboratories in late 2026. The focus is exclusively on postgraduate research in AI, robotics, and biotechnology.
- **Industry Synergy:** The campus is being built with direct physical links to the **Konza Innovation Hub**, allowing students and startups to move seamlessly between academic research and commercial prototyping.

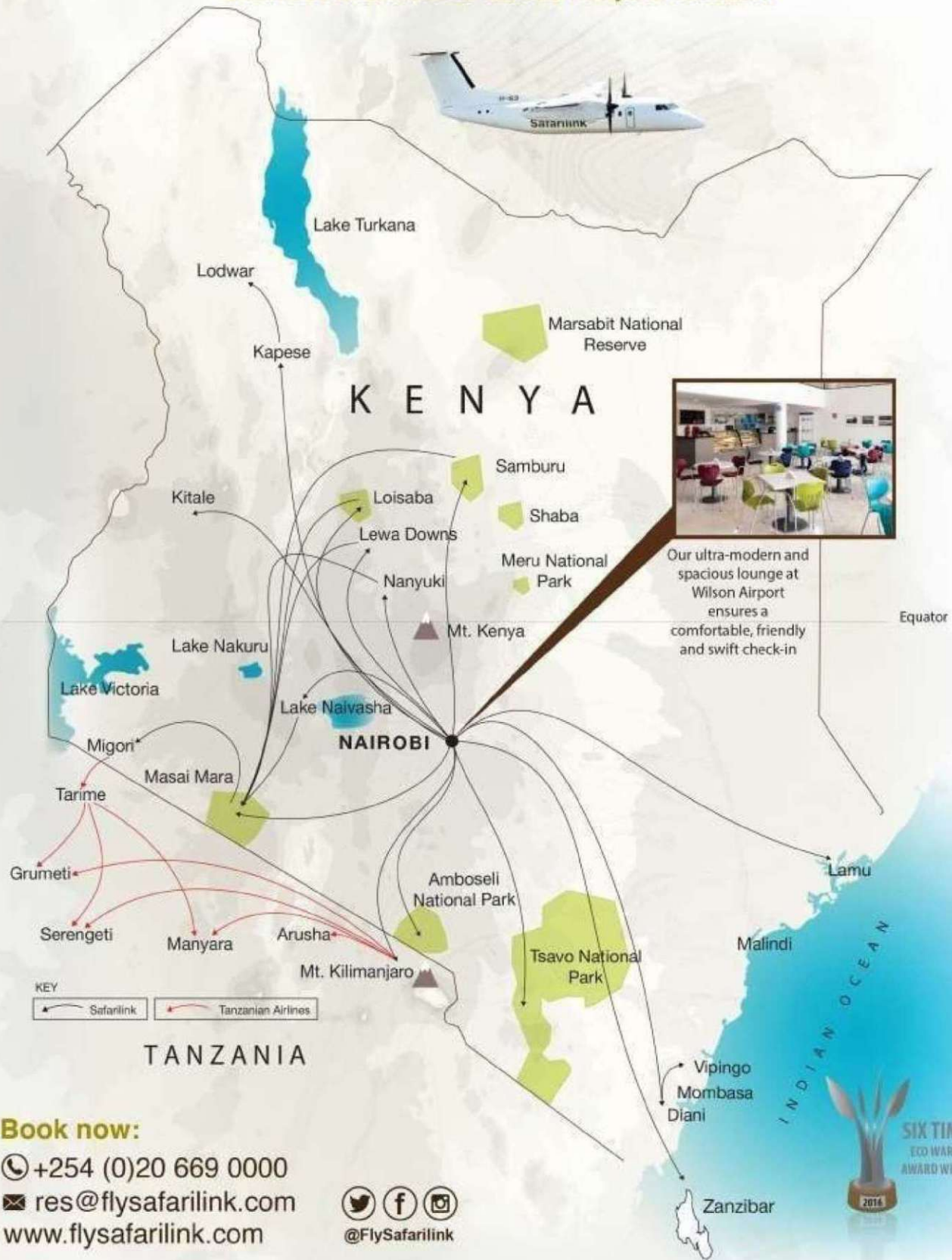
4. Sustainable Living: The Green Tech Hub

In line with Kenya's 2026 climate commitments, Konza is a model of environmental efficiency.

- **Smart Water Management:** 2026 sees the full operation of the city's graywater recycling system. Every drop of water used in the Konza offices is treated on-site and reused for the city's extensive green belts and urban farms.
- **Solar Integration:** Every building completed in 2026 is required to have building-integrated photovoltaics (BIPV), contributing to the city's goal of being a net-zero urban center.

Safarilink

Flying you to all your favourite holiday and business destinations across Kenya & Tanzania



Our ultra-modern and spacious lounge at Wilson Airport ensures a comfortable, friendly and swift check-in

Book now:

+254 (0)20 669 0000

res@flysafarilink.com

www.flysafarilink.com



The Arena of Ambition: Kenya's Talanta Sports Complex Races Toward 2026 Completion



The Talanta Sports Complex, also known as the Raila Odinga International Stadium, has entered its most critical and intensive phase of development. With a strict December 2026 completion target, this 60,000-seater masterpiece is being fast-tracked to serve as the crown jewel of Kenya's sporting infrastructure. The project is the physical manifestation of the "Talanta Hela" initiative, designed not only to host international matches but to serve as a high-performance training center for the next generation of Kenyan athletes. It is a cornerstone of the AFCON 2027 preparations, ensuring that Kenya meets and exceeds CAF and FIFA's stringent stadium requirements.

1. Engineering Excellence: The 2026 Construction Focus

In early 2026, the project has moved past the foundational stages and is now focused on the complex structural and technological "fit-out" of the stadium.

- **The Signature Canopy:** One of the most visible milestones in 2026 is the installation of the stadium's cantilevered roof. This signature canopy is designed to provide 100% cover for the spectators while utilizing advanced "smart-glass" technology to allow natural light for the pitch.
- **The Hybrid Pitch:** In line with global standards, 2026 sees the installation of the hybrid grass system. This combines natural grass with synthetic fibers, ensuring a durable, world-class playing surface that can withstand the rigors of back-to-back international tournaments.
- **VVIP and Media Infrastructure:** Recognizing its role as a host for major international events, construction is peaking on the stadium's luxury boxes, media broadcast centers, and the high-tech VAR (Video Assistant Referee) control room.

2. A Multi-Sport Ecosystem

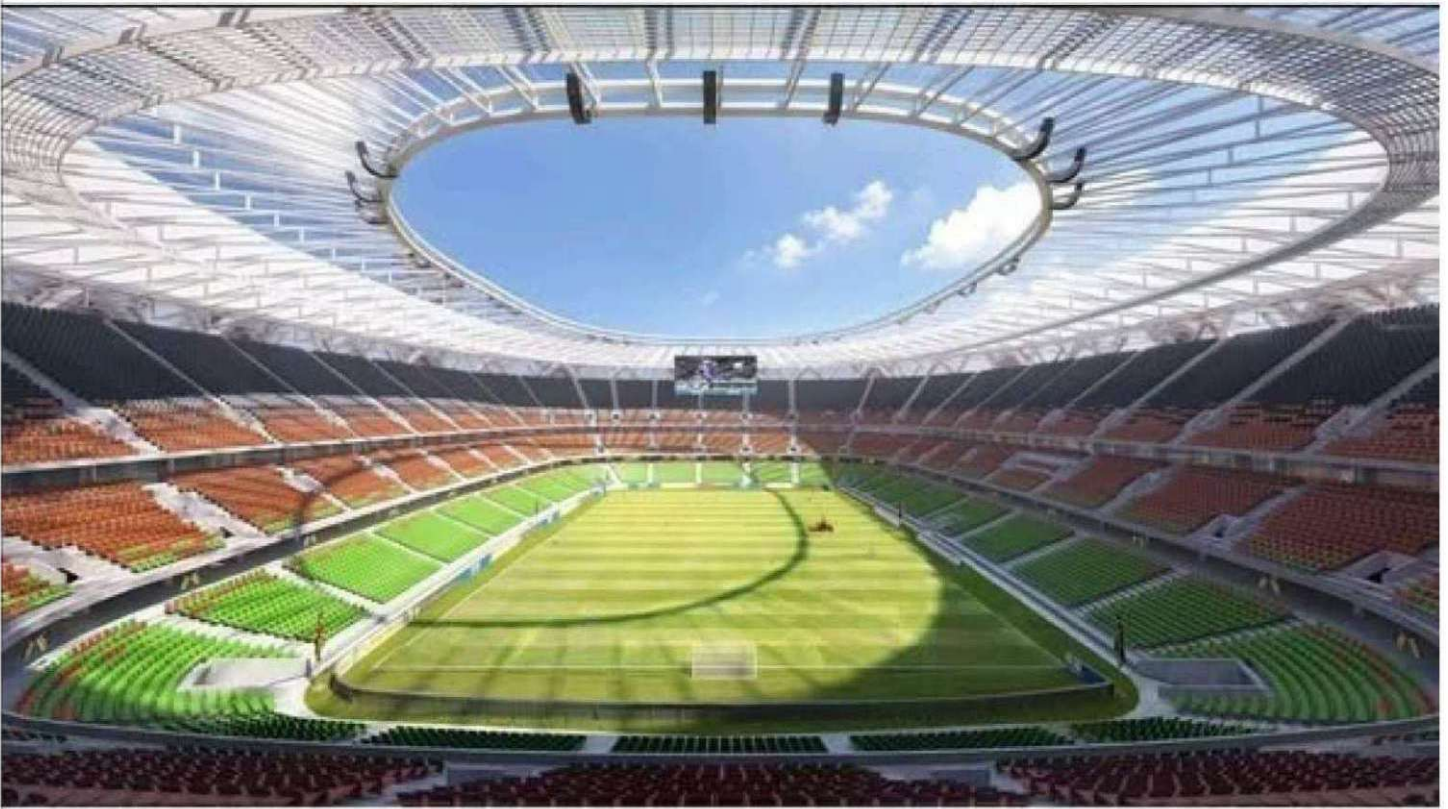
The Talanta Sports Complex is more than just a football pitch. By 2026, the broader "Sports City" components are under active construction:

- **Athletics and Beyond:** The complex includes an Olympic-standard 400m tartan track, several outdoor basketball and volleyball courts, and a world-class aquatic center.
- **High-Performance Center:** A dedicated medical and sports science wing is being built to provide Kenyan athletes with access to cryotherapy, advanced physiotherapy, and data-driven performance monitoring services that previously required travel abroad.
- **Sustainable Lighting:** In alignment with Kenya's 10,000 MW Green Energy target, the stadium is being equipped with high-efficiency LED floodlighting systems powered by integrated solar arrays on the stadium's roof.

3. The Economic and Urban Impact

The construction of the Talanta Sports Complex is a major catalyst for the Ngong Road and Jamhuri corridor.

- **Transport Integration:** To prevent "match-day gridlock," the 2026 urban plan includes a dedicated link to the Nairobi Railway City commuter rail and the expansion of Ngong Road to include Bus Rapid Transit (BRT) lanes specifically for sports fans.
- **Job Creation:** At its 2026 peak, the project is sustaining over 5,000 direct and indirect jobs, ranging from civil engineers to local hospitality staff preparing for the stadium's eventual opening.
- **The MICE Synergy:** Located near the Bomas International Convention Complex (BICC), the Talanta stadium completes a "National Events Zone," allowing Nairobi to host massive conventions and sporting events simultaneously.



4. Road to AFCON 2027 and Beyond

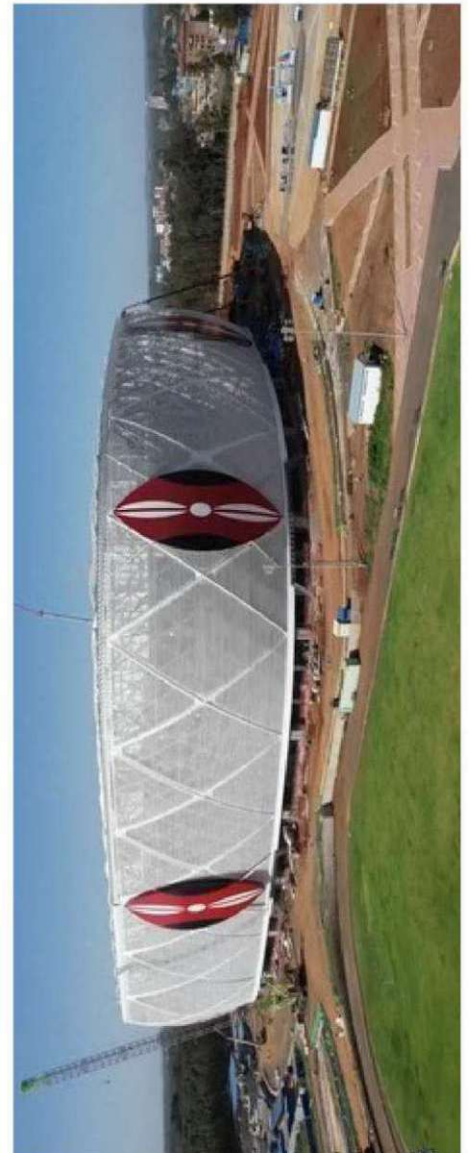
As the December 2026 deadline approaches, the Ministry of Youth Affairs, Creative Economy, and Sports is coordinating closely with CAF inspectors. The Talanta Sports Complex is positioned to be more than a venue; it is a declaration that Kenya is ready to host the world. Beyond football, the stadium is being prepared as a multipurpose venue for concerts and national celebrations, ensuring it remains a commercially viable and self-sustaining asset for decades to come. At its 2026 peak, the project is sustaining over 5,000 direct and indirect jobs, ranging from civil engineers to local hospitality staff.

As the December 2026 deadline approaches, the Ministry of Youth Affairs, Creative Economy,

and Sports is coordinating closely with CAF inspectors to ensure the stadium serves as a global showcase of African agency and organizational excellence.

Conclusion: A Legacy in Steel

By the end of 2026, the Talanta Sports Complex will stand as a symbol of Kenya's rising "soft power." In a city that is already the diplomatic capital of the South, this stadium adds the missing piece of world-class sporting infrastructure. As the first matches kick off in 2027, the hard work currently underway in 2026 will be remembered as the foundation of a new golden era for Kenyan sports.



The Gateway Reimagined: JKIA Modernization and the 2026 Aviation Leap

The 2026 Infrastructure Surge

As of January 2026, the Jomo Kenyatta International Airport (JKIA) has officially entered its most significant transformation since its commissioning. Following the government's 2025 approval of the National Aviation Master Plan, Phase 1 of the JKIA Modernization project is now in full swing. This is not merely a renovation; it is a total reimagining of East Africa's busiest hub to handle a projected 12 million passengers annually.

While previous years saw incremental terminal additions, 2026 marks the groundbreaking and peak structural work for a new, high-capacity terminal designed to unify the airport's currently fragmented passenger flow.

Phase 1: Engineering the Hub of the Future

The 2026 construction phase focuses on three critical "anchors" designed to eliminate the bottlenecks that have historically plagued the facility:

- **The Unified Mega-Terminal:** Construction is active on a new terminal wing that integrates international and domestic arrivals. This facility features "Smart Gate" technology, utilizing biometric facial recognition to slash immigration wait times by 60%.
- **Airside Infrastructure Upgrades:** Beyond the terminal walls, 2026 sees the expansion of taxiways and the construction of additional remote aircraft parking stands. This "airside" expansion is critical for accommodating the larger wide-body aircraft being deployed by global carriers and the growing fleet of Kenya Airways.
- **The Logistics Multiplier:** A new, dedicated **Air Cargo Village** is under construction. This facility includes specialized cold-storage zones to support the rapid export of horticultural products, a key component of Kenya's 2026 trade strategy.

The "Expressway" Synergy

A defining feature of the 2026 modernization is the seamless physical integration with the **Nairobi Expressway**. The new terminal is being built with a direct, dedicated flyover link, allowing business travelers and diplomats to move from the aircraft cabin to the Bomas International Convention Complex (BICC) or the CBD in under 20 minutes.



This connectivity is vital for Nairobi's "MICE" (Meetings, Incentives, Conferences, and Exhibitions) ambitions. By 2026, the airport is no longer an isolated destination but a fully integrated node in the city's transport grid.

Sustainable Aviation: The Green Gateway

In alignment with the national 10,000 MW Green Energy Target, the JKIA modernization is a flagship for sustainable aviation infrastructure:

- **Solar-Powered Operations:** Phase 1 includes the installation of a 10MW solar farm on the airport periphery, aimed at powering 40% of the terminal's daylight energy needs by late 2026.
- **Water Harvesting:** The new terminal's roof is designed as a massive catchment area, funneling rainwater into underground reservoirs for use in the airport's cooling systems and landscaping.

Economic Impact: Powering the "Silicon Savannah"

The 2026 modernization is expected to sustain over **10,000 jobs** in construction, engineering, and specialized aviation services. More importantly, it secures Nairobi's position against regional competition. By investing \$1.2 billion (approx. Sh150 billion) into the facility, Kenya is ensuring that its "Silicon Savannah" remains the preferred entry point for global tech giants and international organizations.



The Bomas International Convention Complex (BICC) Landmark: Nairobi Unveils Africa's Premier Diplomatic Stage



A New Architectural Titan in the City in the Sun

As the countdown to April 2026 begins, all eyes are on a rising silhouette in Nairobi's Lang'ata district. The Bomas International Convention Complex (BICC) is no longer a blueprint; it is a sprawling, nearly-completed reality. With a staggering 11,000-seat capacity, the BICC is set to become the largest and most technologically advanced convention facility in East and Central Africa, catapulting Kenya into the top tier of the global Meetings, Incentives, Conferences, and Exhibitions (MICE) industry.

Engineering for Mass Scale and High Stakes

The BICC is designed to handle the logistical complexities of 21st-century diplomacy. Its centerpiece is a massive, multi-tiered plenary hall that can accommodate 11,000 delegates, but its true genius lies in its flexibility.

- **The Multi-Modal Design:** In 2026, the facility features retractable seating and modular wall systems, allowing it to transition from a massive political assembly to four simultaneous medium-scale corporate conferences in under six hours.
- **A "Phygital" Powerhouse:** Every seat in the BICC is integrated with high-speed 6G-ready fiber connectivity. This ensures that while 11,000 people sit in the hall, millions more can participate via secure, low-latency holographic and virtual reality links, making it the preferred site for the "hybrid" global summits of the late 2020s.

The Economic Ripple: Injecting Billions into the Local Economy

The April 2026 completion date is timed to capture the post-2025 surge in African trade under the AfCFTA. Economists project that the BICC will act as a "multiplier" for the Nairobi economy:

- **Hospitality Boom:** The complex is already driving the construction of three new five-star hotels in the immediate Lang'ata and Karen suburbs.

- **Aviation Growth:** To support the BICC, **Jomo Kenyatta International Airport (JKIA)** is scaling up its "Fast-Track" delegate clearance protocols, expecting an additional 150,000 business travelers annually specifically tied to the new convention center.
- **Direct Employment:** Beyond the thousands of construction jobs that peaked in late 2025, the BICC will require a permanent staff of over 1,200 in 2026, ranging from digital event technologists to specialized hospitality and translation professionals.

Cultural Integration: The "Bomas" Identity

Unlike the sterile glass-and-steel boxes found in other global capitals, the BICC pays homage to its namesake. The "Bomas" (meaning homesteads) heritage is reflected in the complex's circular motifs and the inclusion of an expansive outdoor amphitheater that celebrates African music and dance.

The 2026 vision integrates a "Heritage Village" into the convention experience, allowing international delegates to move from a high-stakes trade negotiation in the morning to an immersive cultural experience in the afternoon—all within the same secure perimeter.

Sustainability: The Green MICE Blueprint

In line with Kenya's 10,000 MW Green Energy Target, the BICC is a showcase of sustainable architecture.

- **Net-Zero Operations:** The building features a massive rooftop solar array and "smart glass" that adjusts opacity to regulate temperature, significantly reducing cooling costs in the Nairobi sun.
- **Zero-Waste Mandate:** By its April 2026 opening, the BICC has committed to a "Zero-Waste-to-Landfill"

The Industrial Frontier: South Africa's Namakwa SEZ and the 2026 Northern Cape Renaissance



The Namakwa Special Economic Zone (SEZ) has emerged as the industrial centerpiece of South Africa's Northern Cape province. Located in the Aggeney region, this multi-billion rand project is no longer just a proposal; it is a sprawling construction site and operational hub designed to fundamentally rewrite the economic geography of the province.

While the Northern Cape has historically been seen as a remote mining outpost, the 2026 vision for the Namakwa SEZ positions it as a sophisticated industrial cluster. By leveraging the region's massive base-metal reserves specifically zinc, lead, and copper and its world-class solar radiation, the SEZ is becoming the "Engine Room" for South Africa's transition into a high-value, green manufacturing economy.

1. The Zinc-Copper-Lead Value Chain: Beyond Raw Extraction

The primary driver of the Namakwa SEZ in 2026 is the **Beneficiation Strategy**. Instead of shipping raw ore through the distant ports of Saldanha or Cape Town, the SEZ is designed to process minerals on-site.

- **The Vedanta Anchor:** Anchor tenant Vedanta Zinc International has entered a critical expansion phase in 2026. The construction of a massive **Zinc Smelter and Refinery** is currently active. This facility is designed to convert raw zinc concentrate into high-grade refined zinc for the domestic galvanized steel industry and for export.
- **Copper and Lead Clustering:** By early 2026, the SEZ has attracted several secondary manufacturers that utilize the refined outputs from the smelter. Construction is underway on plants that produce copper cabling and lead-acid battery components, ensuring that the value-added profits remain within the Northern Cape.

2. The Green Hydrogen and Solar Nexus

What sets the Namakwa SEZ apart in 2026 is its energy profile. It is the first industrial zone in South Africa to be built with a "Renewable-First" mandate, neutral hydrogen to power the heavy-duty mining and transport fleets operating within the corridor.

- **Integrated Solar Parks:** Every major industrial plant completed in 2026 within the SEZ is required to be integrated with on-site solar PV arrays. This is facilitated by the Northern Cape's status as having some of the highest solar radiation levels in the world.

3. Logistics and the Boegoebaai Connection

The success of the Namakwa SEZ in 2026 is inextricably linked to the broader **Northern Corridor** logistics plan.

- **Boegoebaai Port Synergy:** Construction is accelerating on the rail link connecting the Namakwa SEZ to the proposed **Boegoebaai Deep-Water Port**. Once completed, this link will allow the refined products from the SEZ to reach international markets with 30% lower logistics costs than current routes.

4. Socio-Economic Transformation: The "Aggeney Surge"

The Namakwa SEZ is a massive job creator for the Northern Cape, a province that has historically struggled with high unemployment.

- **Direct Employment:** At its 2026 peak, the SEZ construction and operational phases are sustaining over **6,000 direct jobs**.
- **SMME Integration:** Through the "Local Procurement Portal," over 30% of the SEZ's service contracts in 2026 are reserved for local Small, Medium, and Micro Enterprises (SMMEs),



DE LEEUW
GROUP
QUANTITY SURVEYORS



Offices
Bloemfontein
Cape Town
Dubai
Durban
Johannesburg
Nigeria
Pietermaritzburg
Pretoria
Qatar
Rustenburg
Saudi Arabia
Stellenbosch
Windhoek

RECEIVED AN AWARD
FROM THE GREEN BUILDING COUNCIL



GREEN BUILDING COUNCIL SA
MEMBER ORGANISATION - 2013



SCAN ME

www.deleeuwgroup.com

The Rise of Platreef: Redefining Global Metals Production in Limpopo



the Platreef Project in South Africa's Limpopo province has reached a transformative milestone, positioning itself as the world's lowest-cost producer of platinum-group metals (PGMs), nickel, copper, and gold. Developed by Ivanplats (a subsidiary of Ivanhoe Mines), the mine is currently the most significant underground mining development on the African continent.

The 2026 Milestone: Shaft #3 and Phase 1 Commissioning

The defining event of 2026 is the scheduled completion of Shaft #3 in early Q2. Unlike traditional shafts, Shaft #3 is a high-capacity ventilation and hoisting point that serves as the final "lung" and "artery" for Phase 1 operations.

- **Operational Commencement:** With Shaft #3 online, the Phase 1 concentrator is scaling toward its steady-state capacity of 700,000 tonnes per annum (tpa).
- **Mechanized Precision:** Platreef is not a conventional labor-intensive mine; it is 100% mechanized. By early 2026, a fleet of battery-electric and automated underground vehicles is operating within the flat, high-grade "Flatreef" orebody, which averages 24 meters in thickness.
- **Product Mix:** The 2026 output is heavily skewed toward "green metals." While platinum and palladium are the primary drivers, the mine's significant nickel and copper by-products are being fast-tracked for South Africa's emerging electric vehicle (EV) battery value chain.

Phase 2 Expansion: Scaling to a Global Giant

While Phase 1 begins its steady-state run in 2026, construction on **Phase 2** is simultaneously accelerating.

- **Production Leap:** Phase 2 aims to increase the processing capacity from 700,000 tpa to **5.2 million tonnes per annum**. Once fully ramped up, Platreef will become one of the largest PGM-producing mines in the world.

- **Shaft #2 Completion:** Work is ongoing on Shaft #2, which will be one of the largest hoisting shafts in the world with a diameter of 10 meters and a hoisting capacity of over 6 million tonnes per year.
- **Economic Anchor:** By the end of 2026, the combined Phase 1 and 2 developments are expected to sustain over 2,000 direct jobs in the Mokopane region.

A Model for ESG and Sustainability

In alignment with South Africa's 2026 Strategic Minerals Vision, Platreef is being built as a "Green Mine."

- **Solar Power:** 2026 marks the first full year of operation for the mine's initial 5-megawatt (MW) solar power plant, with plans underway to scale this to 100 MW to ensure carbon-neutral production.
- **Water Stewardship:** The mine utilizes treated municipal gray water from the town of Mokopane for its industrial processes, ensuring that scarce local fresh water is preserved for the community.
- **Community Wealth:** Through a Broad-Based Black Economic Empowerment (B-BBEE) structure, 26% of the mine is owned by local communities, employees, and entrepreneurs, ensuring that the wealth generated in 2026 circulates within Limpopo.





Office +27(0)11-795-4007
Cell +27(0)83-372-9802
sven@iesciences.com
www.ies3d.co.za
www.initio.co.tz

 **TOPCON**

WITH GREAT POWER COMES GREAT VERSATILITY



Building Construction (BIM)

Topcon's new GLS-2000 is equipped with ultra high speed scanning that provides time saving benefits without compromising accuracy. With a scan range of over 350 meters, a full-dome 360° x 270° field-of-view, and a simple one-touch operation, the GLS-2000 is a rugged and versatile tool that enables you to capture accurate 3D data in all your challenging work environments, across all your applications. The GLS-2000 is an industry-leading scanner that no serious practitioner should be without.

topcon-positioning.eu

The Rooiwal Restoration: Pretoria's Multi-Billion Rand Blueprint for Water Security (2026)



The Rooiwal Wastewater Treatment Works (WWTW) Phase 2 expansion has become the most critical infrastructure project in the City of Tshwane's portfolio. For years, the Rooiwal facility—the primary processor of wastewater for northern Pretoria—suffered from systematic overloading and mechanical failure, leading to a humanitarian and environmental crisis in the Hammanskraal region. In 2026, the narrative has shifted. Following a landmark intervention by the National Department of Water and Sanitation (DWS) and the appointment of the Development Bank of Southern Africa (DBSA) as the implementing agent, the Phase 2 upgrade is now in its peak construction cycle. This project is not merely an engineering task; it is a Sh4 billion (R2.5 billion) effort to restore the fundamental right to clean water and dignity for millions of residents.

1. The 2026 Construction Milestone: Expanding Capacity

The primary objective of the 2026 construction phase is to address the catastrophic "overcapacity" issue. Historically, the plant was designed to handle 150 megaliters per day (ML/d) but was forced to process nearly 230 ML/d, leading to the discharge of untreated effluent into the Apies River.

- **Biological Nutrient Removal (BNR):** By mid-2026, construction is peaking on new, high-capacity BNR tanks. These tanks utilize advanced microbial processes to remove phosphorus and nitrogen from the water, ensuring that the effluent released into the Pienaars River meets the stringent "Blue Drop" standards set by the Department of Water and Sanitation.

Mechanical Overhaul: In early 2026, the facility is undergoing a total replacement of its primary settling tanks and sludge-handling equipment. These upgrades utilize "smart-sensor" technology to monitor flow rates and chemical balances in real-time, preventing the "sludge-bulking" that previously crippled the plant.

2. The Hammanskraal Impact: Clean Water by 2026

The ultimate "customer" of the Rooiwal upgrade is the community of Hammanskraal. For a decade, the failing plant poisoned the Leeukraal Dam, the primary source of drinking water for the region.

- **Integrated Water Solutions:** While the Rooiwal plant is being built, 2026 sees the full operation of the Klipdrift Package Plant, a modular water treatment facility that provides immediate, safe drinking water to Hammanskraal residents as a temporary bridge.
- **Ecological Restoration:** In 2026, the project includes an "Environmental Remediation" component. With the Rooiwal plant finally discharging clean water, the City of Tshwane has launched a program to rehabilitate the Apies River ecosystem, which had been ecologically dead due to a decade of sewage contamination.

3. Public-Private Partnership and Accountability

A defining feature of the 2026 progress is the shift in management. After previous contractors failed to deliver, the Development Bank of Southern Africa (DBSA) has introduced a rigorous "Project Management Office" (PMO) model to ensure every rand is accounted for.

- **Ring-Fenced Funding:** In 2026, the funding for Rooiwal is strictly ring-fenced from the City of Tshwane's general operational budget. This prevents the redirection of infrastructure funds to other municipal needs, a move that has restored investor and public confidence.
- **Community Oversight:** The 2026 phase includes a "Community Liaison Committee," where residents of Hammanskraal and Rooiwal have a seat at the table, receiving monthly briefings on construction progress and water quality metrics.

4. Socio-Economic Dividends for Pretoria North

The Rooiwal project is a major economic driver for the Tshwane metro in 2026.

- **Job Creation:** The Phase 2 construction is currently sustaining over **1,200 direct jobs**, with a specific mandate that 30% of the labor must be sourced from the local Ward 95 and Hammanskraal areas.
- **Industrial Rebirth:** By restoring reliable wastewater services, the 2026 upgrade has allowed for the unfreezing of several stalled industrial and residential developments in the Pretoria North area. Investors who had previously avoided the region due to "sewerage moratoriums" are now returning to the market.

YOU CREATE THE VISION WE CREATE THE BRICK



Corobrik's clay face brick & paving range offers you versatility in design & durability that lasts a lifetime.



Eskom Tubatse Pumped Storage Scheme: A massive hydroelectric storage project in Limpopo

Tubatse Pumped Storage Scheme (PSS) has emerged as the cornerstone of South Africa's strategy to integrate massive amounts of renewable energy into the national grid. Located in the Limpopo province, this R36 billion (\$2 billion) engineering marvel is designed to act as a "giant water battery," providing the essential stability required for a modern, decarbonized power system. Following the landmark 2025 partnership between Eskom and the African Development Bank (AfDB), the project has moved into a critical implementation phase. In early 2026, the project is a hive of activity as the government pivots toward Public-Private Partnerships (PPPs) to finalize the construction and operation of this 1.5 GW facility.

1. How it Works: The 1,500 MW "Water Battery"

The Tubatse scheme is not a traditional hydroelectric plant that relies on river flow; instead, it uses a closed-loop system between two reservoirs—an upper and a lower located at different elevations.

- **The Pumping Phase:** During periods of low electricity demand (usually at night), surplus energy from South Africa's growing fleet of wind and solar farms is used to pump water from the lower reservoir to the upper reservoir.
- **The Generation Phase:** During peak demand hours (morning and evening), the water is released back down through high-pressure tunnels, spinning massive turbines to generate **1,500 MW of instantaneous power**.
- **Storage Capacity:** By 2026, the design allows for **21,000 megawatt-hours (MWh)** of storage, enough to power a medium-sized city for several days, providing a vital buffer against the intermittency of renewable energy.

2. 2026 Status: The PPP and Procurement Surge

The year 2026 marks a fundamental shift in how Eskom delivers mega-projects. Under the **National Energy Procurement Plan**, the Tubatse project is being developed as a **Public-Private Partnership (PPP)**.

- **Transaction Advisors:** By early 2026, Eskom has finalized the appointment of international transaction advisors to structure the private sector's equity stake in the project.

Civil Works Preparation: While the financial structuring is finalized, 2026 sees active "early works" on site. This includes the construction of heavy-duty access roads and the establishment of the telecommunications and power infrastructure needed to support the massive boring machines that will eventually carve out the underground caverns.

3. Strategic Importance for the "Just Energy Transition"

In alignment with South Africa's 2026 Energy Vision, Tubatse is critical for the "Just Energy Transition" (JET).

- **Replacing Coal Baseload:** As older coal-fired stations in the nearby Mpumalanga province are decommissioned, Tubatse provides the "spinning reserve" and frequency control previously provided by coal, ensuring the grid remains stable at 50Hz.
- **Unlocking Renewables:** By providing large-scale storage, Tubatse "unlocks" the potential for another 3,000–5,000 MW of private solar and wind projects in the northern provinces, as developers now have a way to store their excess midday production.

4. Local Economic Impact in Limpopo

The Tubatse project is a massive socio-economic catalyst for the Sekhukhune District of Limpopo.

- **Direct Employment:** The project is expected to create over 2,500 direct jobs during its peak construction phase.
- **Industrial Rebirth:** The availability of reliable, high-capacity power in 2026 is attracting new investment into Limpopo's mining sector, particularly for the energy-intensive processing of chrome and platinum group metals (PGMs) at sites like the Platreef Mine.
- **Skills Transfer:** Eskom has launched a specialized "Pumped Storage Academy" in 2026 to train local technicians in the high-tech maintenance of hydro-turbines and underground civil engineering.



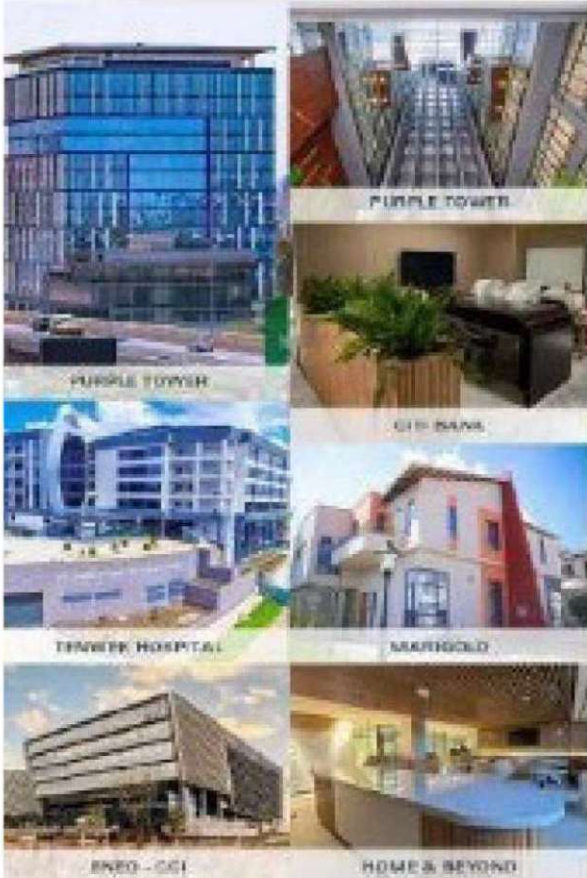


SWASTIK
Aluminium & Joinery Ltd

SWASTIK ALUMINIUM & JOINERY LTD

Harvest Industrial Park, Athi River, Machakos - Kenya

TRANSFORMING SPACES WITH EXPERT SOLUTIONS



PURPLE TOWER - Elevating Nairobi's Skyline

Completed in May 2025, Purple Tower is a 15-storey architectural gem brought to life by Swastik Aluminium and Joinery Ltd.

From precision glazing and aluminium works to bold Alucobond cladding, every detail reflects our dedication to quality and innovation.

A proud project. A lasting landmark.

OUR SERVICES

ALUMINIUM & GLAZING

CUSTOM JOINERY

INTERIOR FIT-OUT

WE ARE NOW OFFICIALLY!

HÄFELE
TRADE PARTNER

We are proud trade partner of Häfele, offering a wide range of premium hardware products. From innovative hinges and drawer systems to modern kitchen and wardrobe fittings.

CONTACT TO GET MORE INFO



+254 794 220 222

FOLLOW US ON



@swastik.ke



/swastik.ke



/swastikaluminium



+254 703 134255



info@sajl.co.ke



www.sajl.co.ke

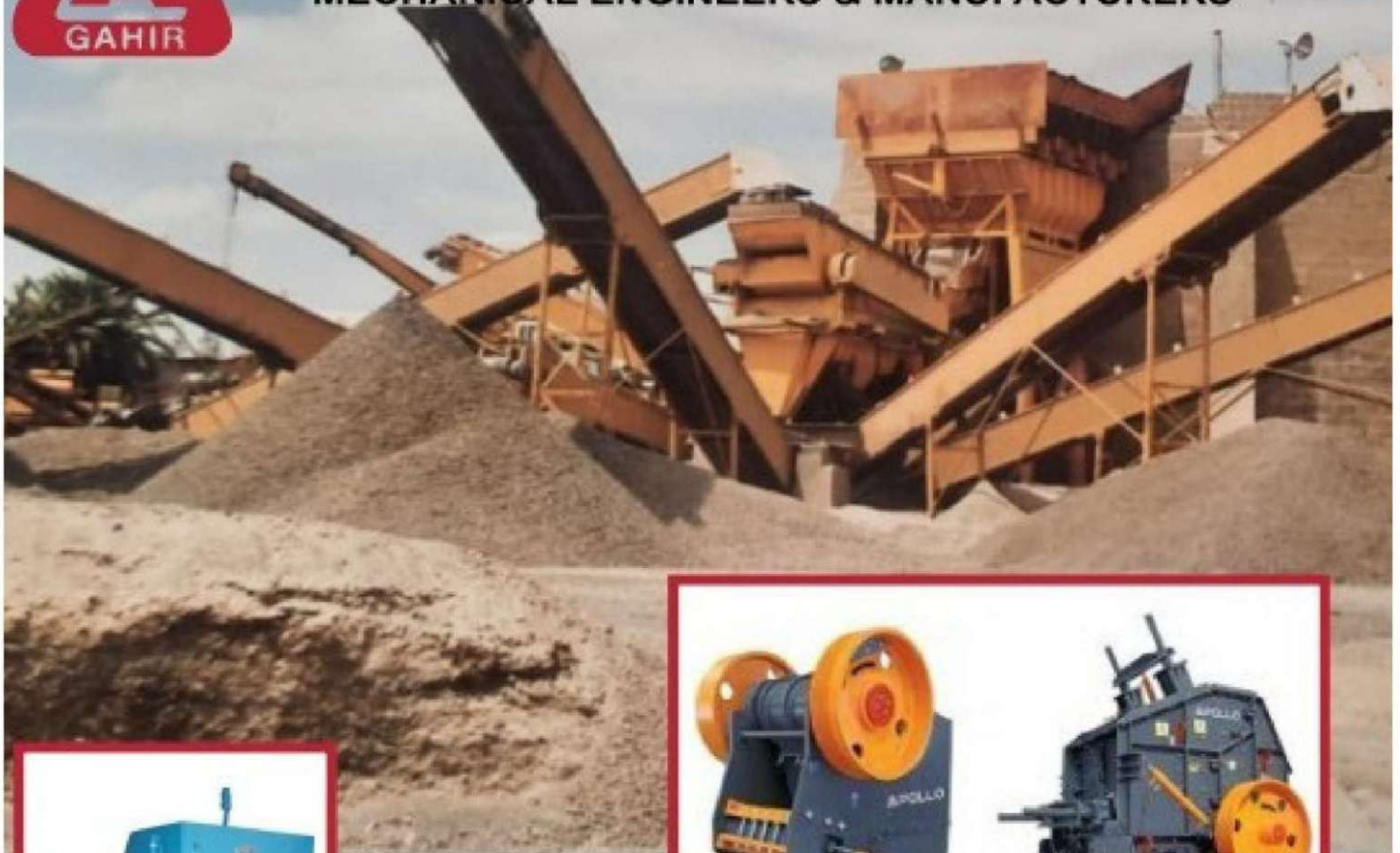


P.O. Box: 1011-00600



GAHIR ENGINEERING WORKS LTD

MECHANICAL ENGINEERS & MANUFACTURERS



FOR ALL TYPES OF PRECAST PRODUCTS

1. Road Kerbs / Road Channels
2. IBD & Side Slabs
3. Paving Slab Moulds
4. Louver Vent Moulds
5. Copping Moulds
6. Fencing Post Moulds
7. Culvert Moulds / SOS
8. Storm Drain Moulds
9. Steel Column Mould
10. Block Machine / Moulds
11. Cabro Machine / Moulds

- Block Making Machines
- Concrete Mixers
- Hoist Machines
- Goods Lift
- Repair Of Crushers
- New Crusher Shafts



P.O. BOX 78252-00507, NAIROBI
TEL: 020-3540428/020-2042837
MOBILE: 0722510237/0722510238
INDUSTRIAL AREA, PATE ROAD OFF LUNGA LUNGA
E-MAIL: info@gahirdesco.co.ke
WEBSITE: www.gahirdesco.co.ke

APOLLO

Quality Mining Equipment
Authorized Dealers of Apollo
Crushers, Gujarat, India

Your Dependable Partner